



[Go to Product page](#)

Datasheet for ABIN7251385

## anti-RYR2 antibody

### 1 Image

#### Overview

Quantity:	200 µL
Target:	RYR2
Reactivity:	Human, Mouse, Rat
Host:	Rabbit
Clonality:	Polyclonal
Conjugate:	This RYR2 antibody is un-conjugated
Application:	Western Blotting (WB), ELISA, Immunofluorescence (IF), Immunohistochemistry (Paraffin-embedded Sections) (IHC (p))

#### Product Details

Immunogen:	Synthesized peptide derived from human RyR-2 around the non-phosphorylation site of Ser2808.
Isotype:	IgG
Characteristics:	Polyclonal Antibody
Purification:	Affinity purification

#### Target Details

Target:	RYR2
Alternative Name:	RYR2 ( <a href="#">RYR2 Products</a> )
Background:	This gene encodes a ryanodine receptor found in cardiac muscle sarcoplasmic reticulum. The encoded protein is one of the components of a calcium channel, composed of a tetramer of the

## Target Details

---

ryanodine receptor proteins and a tetramer of FK506 binding protein 1B proteins, that supplies calcium to cardiac muscle. Mutations in this gene are associated with stress-induced polymorphic ventricular tachycardia and arrhythmogenic right ventricular dysplasia. RYR2 (Ryanodine Receptor 2) is a Protein Coding gene. Diseases associated with RYR2 include Ventricular Tachycardia, Catecholaminergic Polymorphic, 1 and Arrhythmogenic Right Ventricular Dysplasia 2. Among its related pathways are Transport of glucose and other sugars, bile salts and organic acids, metal ions and amine compounds and Cell-type Dependent Selectivity of CCK2R Signaling. GO annotations related to this gene include calcium ion binding and protein kinase binding. An important paralog of this gene is RYR3.

---

Molecular Weight: Observed\_MW: 200-300 kDa  
Calculated\_MW: 564 kDa

---

UniProt: [Q92736](#)

---

Pathways: [Myometrial Relaxation and Contraction](#)

## Application Details

---

---

Application Notes: WB 1:500-1:2000, IHC 1:100-1:300, IF 1:200-1:1000, ELISA 1:5000

---

Restrictions: For Research Use only

## Handling

---

---

Format: Liquid

---

Concentration: 1 mg/mL

---

Buffer: PBS with 0.02 % sodium azide, 0.5 % BSA and 50 % glycerol, pH 7.4

---

Preservative: Sodium azide

---

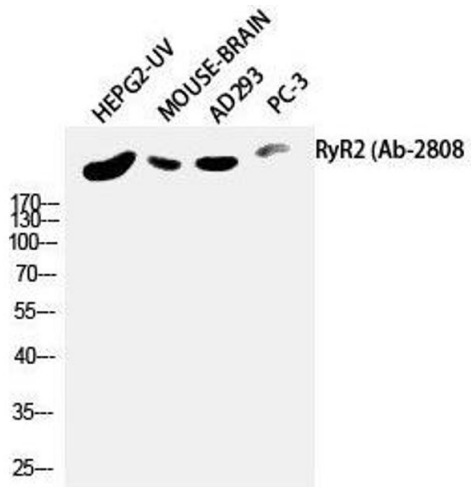
Precaution of Use: This product contains Sodium azide: a POISONOUS AND HAZARDOUS SUBSTANCE which should be handled by trained staff only.

---

Storage: -20 °C

---

Storage Comment: Store at -20°C. Avoid freeze / thaw cycles.



### Western Blotting

**Image 1.** Western Blot analysis of HepG2-UV, Mouse brain, AD293T, PC-3 using RYR2 Polyclonal Antibody at dilution of 1:2000.