

Datasheet for ABIN7251388

anti-S100A1 antibody[Go to Product page](#)

1 Image

Overview

Quantity:	200 µL
Target:	S100A1
Reactivity:	Human, Mouse, Rat
Host:	Rabbit
Clonality:	Polyclonal
Conjugate:	This S100A1 antibody is un-conjugated
Application:	Western Blotting (WB), ELISA, Immunofluorescence (IF), Immunohistochemistry (Paraffin-embedded Sections) (IHC (p))

Product Details

Immunogen:	Synthesized peptide derived from the N-terminal region of human S-100 alpha
Isotype:	IgG
Characteristics:	Polyclonal Antibody
Purification:	Affinity purification

Target Details

Target:	S100A1
Alternative Name:	S100A1 (S100A1 Products)
Background:	The protein encoded by this gene is a member of the S100 family of proteins containing 2 EF-hand calcium-binding motifs. S100 proteins are localized in the cytoplasm and/or nucleus of a wide range of cells, and involved in the regulation of a number of cellular processes such as cell

Target Details

cycle progression and differentiation. S100 genes include at least 13 members which are located as a cluster on chromosome 1q21. This protein may function in stimulation of Ca²⁺-induced Ca²⁺ release, inhibition of microtubule assembly, and inhibition of protein kinase C-mediated phosphorylation. Reduced expression of this protein has been implicated in cardiomyopathies.

Molecular Weight: Observed_MW: 10 kDa
Calculated_MW: 11 kDa

UniProt: [P23297](#)

Pathways: [Regulation of Muscle Cell Differentiation](#), [Toll-Like Receptors Cascades](#), [S100 Proteins](#)

Application Details

Application Notes: WB 1:500-1:2000, IHC 1:100-1:300, IF 1:200-1:1000, ELISA 1:20000

Restrictions: For Research Use only

Handling

Format: Liquid

Concentration: 1 mg/mL

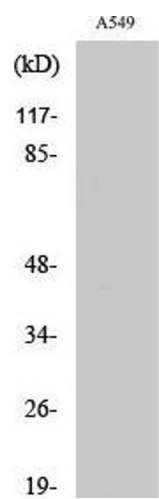
Buffer: PBS with 0.02 % sodium azide, 0.5 % BSA and 50 % glycerol, pH 7.4

Preservative: Sodium azide

Precaution of Use: This product contains Sodium azide: a POISONOUS AND HAZARDOUS SUBSTANCE which should be handled by trained staff only.

Storage: -20 °C

Storage Comment: Store at -20°C. Avoid freeze / thaw cycles.



Western Blotting

Image 1. Western Blot analysis of A549 cells with S100A1 Polyclonal Antibody