



[Go to Product page](#)

Datasheet for ABIN7251400

anti-TGFB1 antibody

3 Images

Overview

Quantity:	200 µL
Target:	TGFB1
Reactivity:	Human, Mouse, Rat
Host:	Rabbit
Clonality:	Polyclonal
Conjugate:	This TGFB1 antibody is un-conjugated
Application:	Western Blotting (WB), ELISA, Immunohistochemistry (Paraffin-embedded Sections) (IHC (p)), Immunofluorescence (IF)

Product Details

Immunogen:	Synthesized peptide derived from the C-terminal region of human TGFbeta1
Isotype:	IgG
Characteristics:	Polyclonal Antibody
Purification:	Affinity purification

Target Details

Target:	TGFB1
Alternative Name:	TGFB1 (TGFB1 Products)
Background:	Multifunctional protein that controls proliferation, differentiation and other functions in many cell types. Many cells synthesize TGFB1 and have specific receptors for it. It positively and negatively regulates many other growth factors. It plays an important role in bone remodeling

Target Details

as it is a potent stimulator of osteoblastic bone formation, causing chemotaxis, proliferation and differentiation in committed osteoblasts. Can promote either T-helper 17 cells (Th17) or regulatory T-cells (Treg) lineage differentiation in a concentration-dependent manner. At high concentrations, leads to FOXP3-mediated suppression of RORC and down-regulation of IL-17 expression, favoring Treg cell development. At low concentrations in concert with IL-6 and IL-21, leads to expression of the IL-17 and IL-23 receptors, favoring differentiation to Th17 cells.

Molecular Weight: Observed_MW: 44 kDa
Calculated_MW: 44 kDa

UniProt: [P01137](#)

Pathways: [EGFR Signaling Pathway](#), [Dopaminergic Neurogenesis](#), [Cellular Response to Molecule of Bacterial Origin](#), [Glycosaminoglycan Metabolic Process](#), [Regulation of Leukocyte Mediated Immunity](#), [Regulation of Muscle Cell Differentiation](#), [Positive Regulation of Immune Effector Process](#), [Cell-Cell Junction Organization](#), [Production of Molecular Mediator of Immune Response](#), [Ribonucleoside Biosynthetic Process](#), [Skeletal Muscle Fiber Development](#), [Regulation of Carbohydrate Metabolic Process](#), [Protein targeting to Nucleus](#), [Autophagy](#), [Cancer Immune Checkpoints](#)

Application Details

Application Notes: WB 1:500-1:2000, IHC 1:100-1:300, IF 1:200-1:1000, ELISA 1:20000

Restrictions: For Research Use only

Handling

Format: Liquid

Concentration: 1 mg/mL

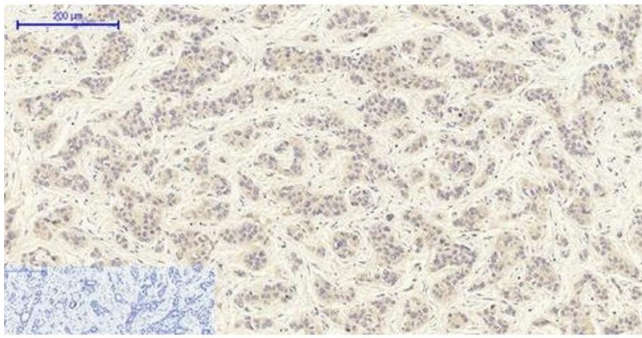
Buffer: PBS with 0.02 % sodium azide, 0.5 % BSA and 50 % glycerol, pH 7.4

Preservative: Sodium azide

Precaution of Use: This product contains Sodium azide: a POISONOUS AND HAZARDOUS SUBSTANCE which should be handled by trained staff only.

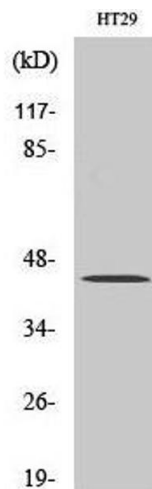
Storage: -20 °C

Storage Comment: Store at -20°C. Avoid freeze / thaw cycles.



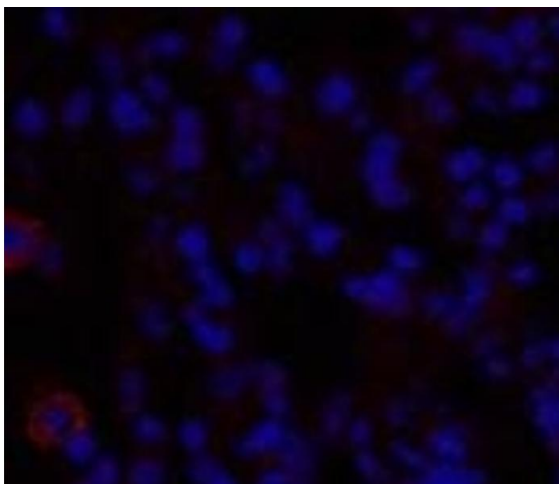
Immunohistochemistry (Paraffin-embedded Sections)

Image 1. Immunohistochemistry of paraffin-embedded Human liver cancer tissue using TGFβ1 Polyclonal Antibody at dilution of 1:200.



Western Blotting

Image 2. Western Blot analysis of MCF7 cells using TGFβ1 Polyclonal Antibody at dilution of 1:2000.



Immunofluorescence

Image 3. Immunofluorescence analysis of Rat lung tissue using TGFβ1 Polyclonal Antibody at dilution of 1:200.