



[Go to Product page](#)

Datasheet for ABIN7251403

anti-IL-8 antibody

3 Images

Overview

| | |
|--------------|--|
| Quantity: | 200 µL |
| Target: | IL-8 (IL8) |
| Reactivity: | Human |
| Host: | Rabbit |
| Clonality: | Polyclonal |
| Conjugate: | This IL-8 antibody is un-conjugated |
| Application: | Western Blotting (WB), ELISA, Immunohistochemistry (Paraffin-embedded Sections) (IHC (p)), Immunofluorescence (IF) |

Product Details

| | |
|------------------|--|
| Immunogen: | Synthesized peptide derived from the C-terminal region of human IL8. |
| Isotype: | IgG |
| Characteristics: | Polyclonal Antibody |
| Purification: | Affinity purification |

Target Details

| | |
|-------------------|---|
| Target: | IL-8 (IL8) |
| Alternative Name: | IL8 (IL8 Products) |
| Background: | IL-8 is a chemotactic factor that attracts neutrophils, basophils, and T-cells, but not monocytes. It is also involved in neutrophil activation. It is released from several cell types in response to an inflammatory stimulus. IL-8(6-77) has a 5-10-fold higher activity on neutrophil activation, IL-8(5- |

Target Details

77) has increased activity on neutrophil activation and IL-8(7-77) has a higher affinity to receptors CXCR1 and CXCR2 as compared to IL-8(1-77), respectively.

Molecular Weight: Observed_MW: 11 kDa
Calculated_MW: 11 kDa

UniProt: [P10145](#)

Pathways: [TLR Signaling](#), [Cellular Response to Molecule of Bacterial Origin](#), [Regulation of G-Protein Coupled Receptor Protein Signaling](#), [ER-Nucleus Signaling](#), [Hepatitis C](#), [Autophagy](#)

Application Details

Application Notes: WB 1:500-1:2000, IHC 1:100-1:300, IF 1:100-1:300, ELISA 1:20000

Restrictions: For Research Use only

Handling

Format: Liquid

Concentration: 1 mg/mL

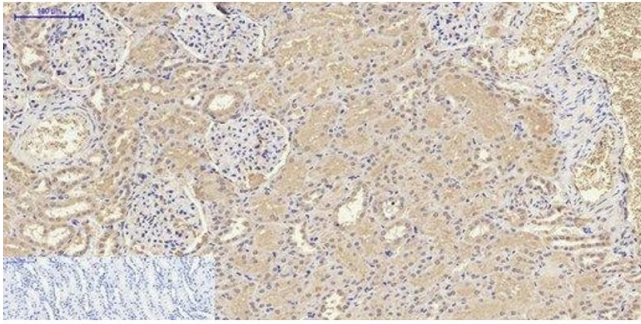
Buffer: PBS with 0.02 % sodium azide, 0.5 % BSA and 50 % glycerol pH 7.4.

Preservative: Sodium azide

Precaution of Use: This product contains Sodium azide: a POISONOUS AND HAZARDOUS SUBSTANCE which should be handled by trained staff only.

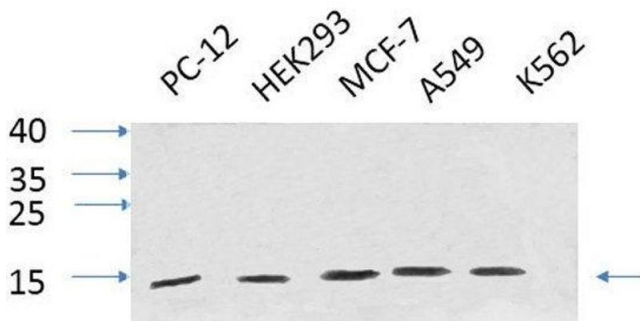
Storage: -20 °C

Storage Comment: Store at -20°C. Avoid freeze / thaw cycles.



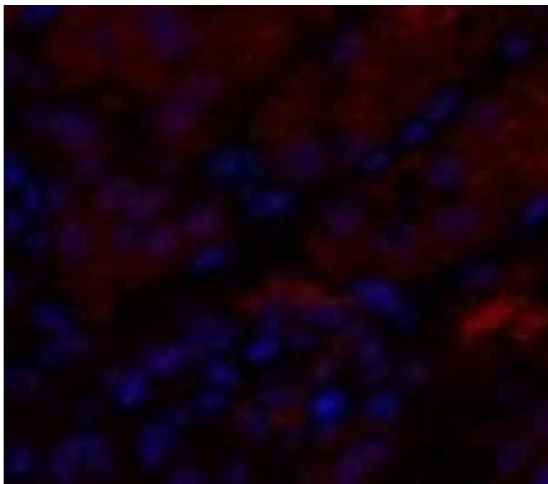
Immunohistochemistry (Paraffin-embedded Sections)

Image 1. Immunohistochemistry of paraffin-embedded Human kidney tissue using IL8 Polyclonal Antibody at dilution of 1:200.



Western Blotting

Image 2. Western Blot analysis of various cells using IL8 Polyclonal Antibody at dilution of 1:1000.



Immunofluorescence

Image 3. Immunofluorescence analysis of Human kidney tissue using IL8 Polyclonal Antibody at dilution of 1:200.