

Datasheet for ABIN7251412

**anti-BMP2 antibody**

3 Images

[Go to Product page](#)

## Overview

Quantity:	200 µL
Target:	BMP2
Reactivity:	Human, Rat, Mouse
Host:	Rabbit
Clonality:	Polyclonal
Conjugate:	This BMP2 antibody is un-conjugated
Application:	Western Blotting (WB), ELISA, Immunohistochemistry (Paraffin-embedded Sections) (IHC (p))

## Product Details

Immunogen:	Synthesized peptide derived from the C-terminal region of human BMP-2.
Isotype:	IgG
Characteristics:	Polyclonal Antibody
Purification:	Affinity purification

## Target Details

Target:	BMP2
Alternative Name:	BMP2 ( <a href="#">BMP2 Products</a> )
Background:	This gene encodes a member of the transforming growth factor-beta (TGFB) superfamily. The encoded preproprotein is proteolytically processed to generate each subunit of the disulfide-linked homodimer, which induces bone and cartilage formation.

## Target Details

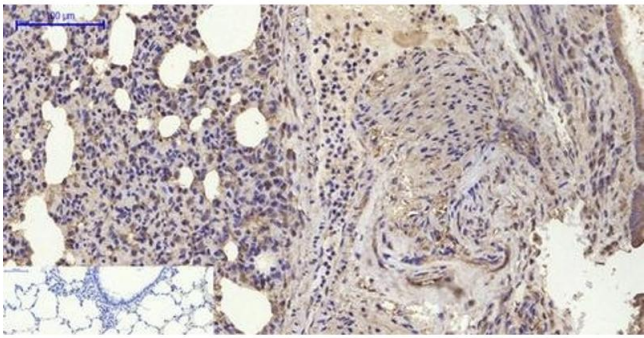
Molecular Weight:	Observed_MW: 44 kDa
	Calculated_MW: 45 kDa
UniProt:	<a href="#">P12643</a>
Pathways:	<a href="#">Regulation of Hormone Metabolic Process</a> , <a href="#">Regulation of Hormone Biosynthetic Process</a> , <a href="#">Regulation of Muscle Cell Differentiation</a> , <a href="#">Growth Factor Binding</a> , <a href="#">Positive Regulation of fat Cell Differentiation</a>

## Application Details

Application Notes:	WB 1:500-1:2000, IHC 1:100-1:300 ELISA 1:10000
Restrictions:	For Research Use only

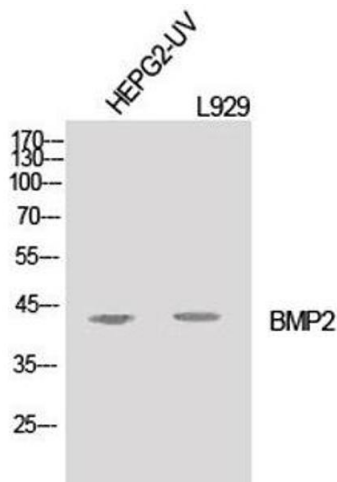
## Handling

Format:	Liquid
Concentration:	1 mg/mL
Buffer:	PBS with 0.02 % sodium azide, 0.5 % BSA and 50 % glycerol pH 7.4.
Preservative:	Sodium azide
Precaution of Use:	This product contains Sodium azide: a POISONOUS AND HAZARDOUS SUBSTANCE which should be handled by trained staff only.
Storage:	-20 °C
Storage Comment:	Store at -20°C. Avoid freeze / thaw cycles.



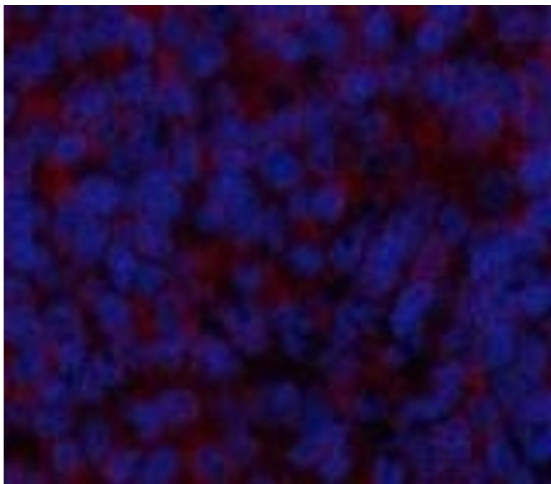
**Immunohistochemistry (Paraffin-embedded Sections)**

**Image 1.** Immunohistochemistry of paraffin-embedded Rat lung tissue using BMP2 Polyclonal Antibody at dilution of 1:200.



**Western Blotting**

**Image 2.** Western Blot analysis of HepG2-UV, L929 cells using BMP2 Polyclonal Antibody at dilution of 1:1000.



**Immunofluorescence**

**Image 3.** Immunofluorescence analysis of Rat spleen tissue using BMP2 Polyclonal Antibody at dilution of 1:200.