

Datasheet for ABIN7251424  
**anti-EEF2 antibody (pThr56)**[Go to Product page](#)

## 1 Image

## Overview

Quantity:	200 µL
Target:	EEF2
Binding Specificity:	pThr56
Reactivity:	Human, Mouse, Rat
Host:	Rabbit
Clonality:	Polyclonal
Conjugate:	This EEF2 antibody is un-conjugated
Application:	Western Blotting (WB), ELISA

## Product Details

Immunogen:	Synthesized phospho derived from human eEF2 (Phospho-Thr56)
Isotype:	IgG
Characteristics:	Phosphorylated antibody
Purification:	Affinity purification

## Target Details

Target:	EEF2
Alternative Name:	EEF2 ( <a href="#">EEF2 Products</a> )
Background:	This gene encodes a member of the GTP-binding translation elongation factor family. This protein is an essential factor for protein synthesis. It promotes the GTP-dependent

## Target Details

	translocation of the nascent protein chain from the A-site to the P-site of the ribosome. This protein is completely inactivated by EF-2 kinase phosphorylation.
Molecular Weight:	100 kDa
UniProt:	<a href="#">P13639</a>
Pathways:	<a href="#">AMPK Signaling</a>

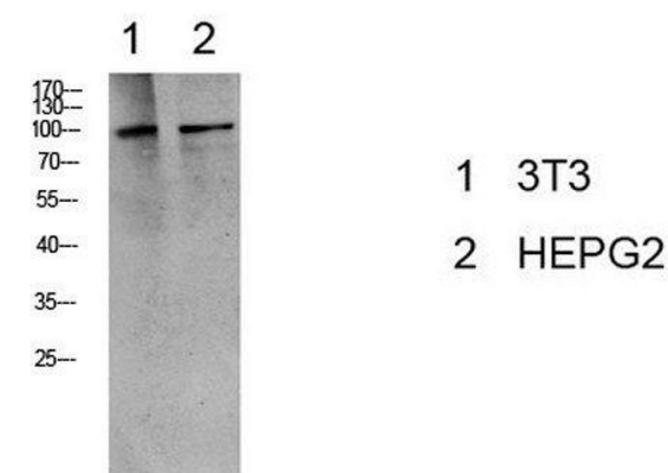
## Application Details

Application Notes:	WB 1:500-2000, ELISA 1:10000-20000
Restrictions:	For Research Use only

## Handling

Format:	Liquid
Concentration:	1 mg/mL
Buffer:	PBS with 0.02 % sodium azide, 0.5 % BSA and 50 % glycerol, pH 7.4
Preservative:	Sodium azide
Precaution of Use:	This product contains Sodium azide: a POISONOUS AND HAZARDOUS SUBSTANCE which should be handled by trained staff only.
Storage:	-20 °C
Storage Comment:	Store at -20°C. Avoid freeze / thaw cycles.

## Images



### Western Blotting

**Image 1.** Western Blot analysis of 3T3, HepG2 cells using Phospho-eEF2 (Thr56) Polyclonal Antibody at dilution of 1:1000.