



[Go to Product page](#)

Datasheet for ABIN7251568 anti-MBTPS2 antibody

2 Images

Overview

Quantity:	200 µL
Target:	MBTPS2
Reactivity:	Human, Mouse
Host:	Rabbit
Clonality:	Polyclonal
Conjugate:	This MBTPS2 antibody is un-conjugated
Application:	ELISA, Western Blotting (WB), Immunohistochemistry (IHC)

Product Details

Immunogen:	Synthetic peptide of human MBTPS2
Isotype:	IgG
Characteristics:	Polyclonal Antibody
Purification:	Antigen affinity purification

Target Details

Target:	MBTPS2
Alternative Name:	MBTPS2 (MBTPS2 Products)
Background:	<p>This gene encodes a intramembrane zinc metalloprotease, which is essential in development. This protease functions in the signal protein activation involved in sterol control of transcription and the ER stress response. Mutations in this gene have been associated with ichthyosis follicularis with atrichia and photophobia (IFAP syndrome), IFAP syndrome has been</p>

Target Details

quantitatively linked to a reduction in cholesterol homeostasis and ER stress response.

Molecular Weight: Observed_MW: Refer to figures
Calculated_MW: 57 kDa

UniProt: [O43462](#)

Pathways: [ER-Nucleus Signaling](#)

Application Details

Application Notes: WB 1:500-1:2000, IHC 1:10-1:50, ELISA 1:5000-1:10000

Restrictions: For Research Use only

Handling

Format: Liquid

Concentration: 0.9 mg/mL

Buffer: PBS with 0.05 % Sodium azide and 40 % Glycerol, pH 7.4

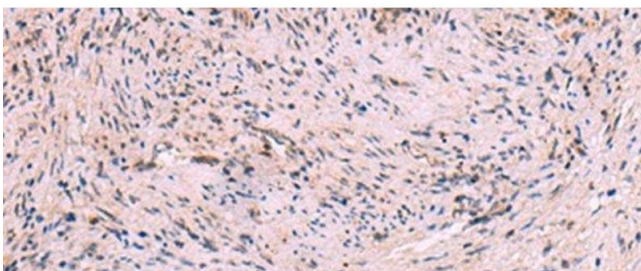
Preservative: Sodium azide

Precaution of Use: This product contains Sodium azide: a POISONOUS AND HAZARDOUS SUBSTANCE which should be handled by trained staff only.

Storage: -20 °C

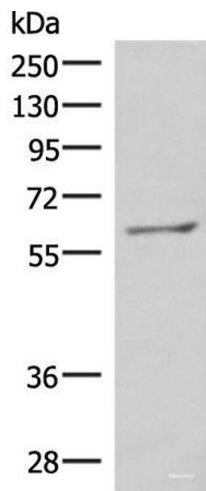
Storage Comment: Store at -20°C. Avoid freeze / thaw cycles.

Images



Immunohistochemistry (Paraffin-embedded Sections)

Image 1. Immunohistochemistry of paraffin-embedded Human cervical cancer tissue using MBTPS2 Polyclonal Antibody at dilution of 1:30(x200)



Western Blotting

Image 2. Western blot analysis of RAW264.7 cell lysate using MBTPS2 Polyclonal Antibody at dilution of 1:800