



[Go to Product page](#)

Datasheet for ABIN7251574

## anti-JAM3 antibody

### 2 Images

#### Overview

Quantity:	200 µL
Target:	JAM3
Reactivity:	Human, Mouse
Host:	Rabbit
Clonality:	Polyclonal
Conjugate:	This JAM3 antibody is un-conjugated
Application:	ELISA, Western Blotting (WB), Immunohistochemistry (IHC)

#### Product Details

Immunogen:	Synthetic peptide of human JAM3
Isotype:	IgG
Characteristics:	Polyclonal Antibody
Purification:	Antigen affinity purification

#### Target Details

Target:	JAM3
Alternative Name:	JAM3 ( <a href="#">JAM3 Products</a> )
Background:	Tight junctions represent one mode of cell-to-cell adhesion in epithelial or endothelial cell sheets, forming continuous seals around cells and serving as a physical barrier to prevent solutes and water from passing freely through the paracellular space. The protein encoded by this immunoglobulin superfamily gene member is localized in the tight junctions between high

## Target Details

---

endothelial cells. Unlike other proteins in this family, the this protein is unable to adhere to leukocyte cell lines and only forms weak homotypic interactions. The encoded protein is a member of the junctional adhesion molecule protein family and acts as a receptor for another member of this family. A mutation in an intron of this gene is associated with hemorrhagic destruction of the brain, subependymal calcification, and congenital cataracts. Alternative splicing results in multiple transcript variants.

---

Molecular Weight: Observed\_MW: Refer to figures  
Calculated\_MW: 35 kDa

---

UniProt: [Q9BX67](#)

## Application Details

---

Application Notes: WB 1:500-1:2000, IHC 1:40-1:200, ELISA 1:5000-1:10000

---

Restrictions: For Research Use only

## Handling

---

Format: Liquid

---

Concentration: 1.32 mg/mL

---

Buffer: PBS with 0.05 % Sodium azide and 40 % Glycerol, pH 7.4

---

Preservative: Sodium azide

---

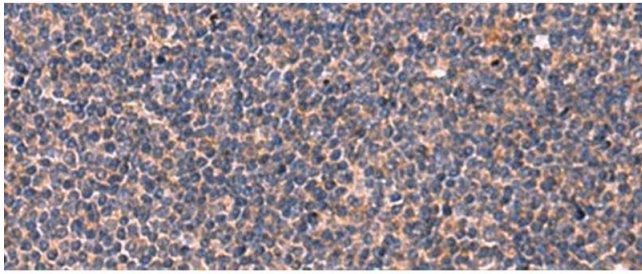
Precaution of Use: This product contains Sodium azide: a POISONOUS AND HAZARDOUS SUBSTANCE which should be handled by trained staff only.

---

Storage: -20 °C

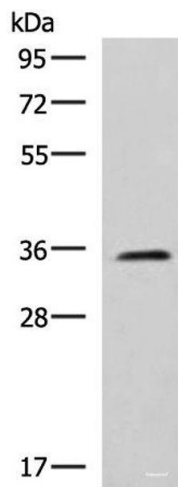
---

Storage Comment: Store at -20°C. Avoid freeze / thaw cycles.



### Immunohistochemistry (Paraffin-embedded Sections)

**Image 1.** Immunohistochemistry of paraffin-embedded Human tonsil tissue using JAM3 Polyclonal Antibody at dilution of 1:45(x200)



### Western Blotting

**Image 2.** Western blot analysis of K562 cell lysate using JAM3 Polyclonal Antibody at dilution of 1:1000