

Datasheet for ABIN7251709

anti-GPA33 antibody[Go to Product page](#)**1** Image

Overview

Quantity:	200 µL
Target:	GPA33
Reactivity:	Human, Mouse
Host:	Rabbit
Clonality:	Polyclonal
Conjugate:	This GPA33 antibody is un-conjugated
Application:	Western Blotting (WB), ELISA

Product Details

Immunogen:	Fusion protein of human GPA33
Isotype:	IgG
Characteristics:	Polyclonal Antibody
Purification:	Antigen affinity purification

Target Details

Target:	GPA33
Alternative Name:	GPA33 (GPA33 Products)
Background:	The glycoprotein encoded by this gene is a cell surface antigen that is expressed in greater than 95 % of human colon cancers. The open reading frame encodes a 319-amino acid polypeptide having a putative secretory signal sequence and 3 potential glycosylation sites. The predicted mature protein has a 213-amino acid extracellular region, a single transmembrane domain, and

Target Details

a 62-amino acid intracellular tail. The sequence of the extracellular region contains 2 domains characteristic of the CD2 subgroup of the immunoglobulin (Ig) superfamily.

Molecular Weight: Observed_MW: Refer to figures
Calculated_MW: 36 kDa

UniProt: [Q99795](#)

Application Details

Application Notes: WB 1:500-1:2000, ELISA 1:5000-1:10000

Restrictions: For Research Use only

Handling

Format: Liquid

Concentration: 0.5 mg/mL

Buffer: PBS with 0.05 % Sodium azide and 40 % Glycerol, pH 7.4

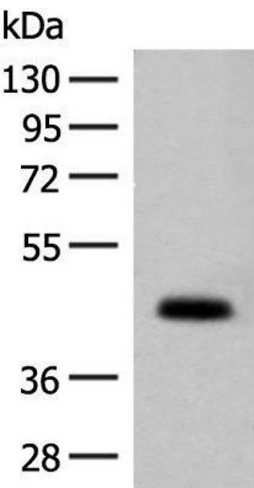
Preservative: Sodium azide

Precaution of Use: This product contains Sodium azide: a POISONOUS AND HAZARDOUS SUBSTANCE which should be handled by trained staff only.

Storage: -20 °C

Storage Comment: Store at -20°C. Avoid freeze / thaw cycles.

Images



Western Blotting

Image 1. Western blot analysis of Mouse small intestines tissue lysate using GPA33 Polyclonal Antibody at dilution of 1:200