

Datasheet for ABIN7251757  
**anti-Annexin A13 antibody**[Go to Product page](#)

## 3 Images

## Overview

Quantity:	200 µL
Target:	Annexin A13 (ANXA13)
Reactivity:	Human, Mouse
Host:	Rabbit
Clonality:	Polyclonal
Conjugate:	This Annexin A13 antibody is un-conjugated
Application:	Western Blotting (WB), ELISA, Immunohistochemistry (IHC)

## Product Details

Immunogen:	Fusion protein of human ANXA13
Isotype:	IgG
Characteristics:	Polyclonal Antibody
Purification:	Antigen affinity purification

## Target Details

Target:	Annexin A13 (ANXA13)
Alternative Name:	ANXA13 ( <a href="#">ANXA13 Products</a> )
Background:	This gene encodes a member of the annexin family. Members of this calcium-dependent phospholipid-binding protein family play a role in the regulation of cellular growth and in signal transduction pathways. The specific function of this gene has not yet been determined, however, it is associated with the plasma membrane of undifferentiated, proliferating

## Target Details

endothelial cells and differentiated villus enterocytes. Alternatively spliced transcript variants encoding different isoforms have been identified.

Molecular Weight: Observed\_MW: Refer to figures  
Calculated\_MW: 35 kDa

UniProt: [P27216](#)

## Application Details

Application Notes: WB 1:500-1:2000, IHC 1:100-1:300, ELISA 1:5000-1:10000

Restrictions: For Research Use only

## Handling

Format: Liquid

Concentration: 1.86 mg/mL

Buffer: PBS with 0.05 % Sodium azide and 40 % Glycerol, pH 7.4

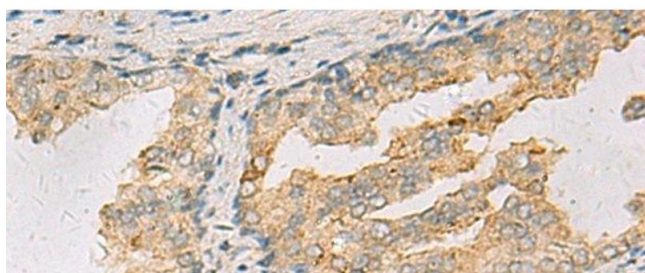
Preservative: Sodium azide

Precaution of Use: This product contains Sodium azide: a POISONOUS AND HAZARDOUS SUBSTANCE which should be handled by trained staff only.

Storage: -20 °C

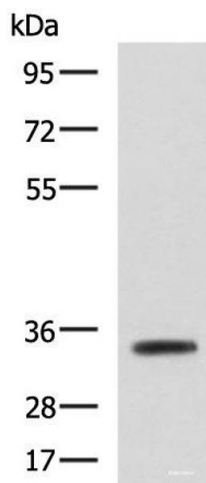
Storage Comment: Store at -20°C. Avoid freeze / thaw cycles.

## Images



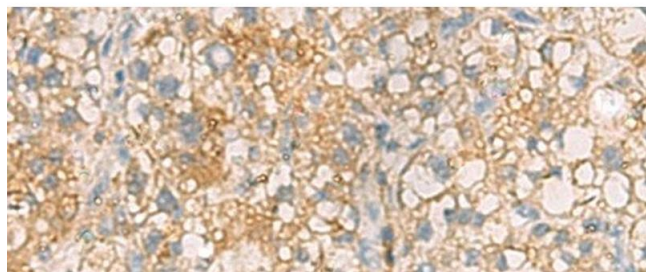
### Immunohistochemistry (Paraffin-embedded Sections)

**Image 1.** Immunohistochemistry of paraffin-embedded Human prostate cancer tissue using ANXA13 Polyclonal Antibody at dilution of 1:105(x200)



#### Western Blotting

**Image 2.** Western blot analysis of Mouse small intestines tissue lysate using ANXA13 Polyclonal Antibody at dilution of 1:800



#### Immunohistochemistry (Paraffin-embedded Sections)

**Image 3.** Immunohistochemistry of paraffin-embedded Human liver cancer tissue using ANXA13 Polyclonal Antibody at dilution of 1:105(x200)