



[Go to Product page](#)

Datasheet for ABIN7251772
anti-Cholecystokinin antibody

1 Image

Overview

Quantity:	200 µL
Target:	Cholecystokinin (CCK)
Reactivity:	Human, Mouse
Host:	Rabbit
Clonality:	Polyclonal
Conjugate:	This Cholecystokinin antibody is un-conjugated
Application:	Immunohistochemistry (IHC), ELISA

Product Details

Immunogen:	Fusion protein of human CCK
Isotype:	IgG
Characteristics:	Polyclonal Antibody
Purification:	Antigen affinity purification

Target Details

Target:	Cholecystokinin (CCK)
Alternative Name:	CCK (CCK Products)
Background:	This gene encodes a member of the gastrin/cholecystokinin family of proteins. The encoded preproprotein is proteolytically processed to generate multiple protein products, including the peptide hormones cholecystokinin-8, -12, -33, and others. The encoded peptides have been shown to regulate gastric acid secretion and food intake. A sulfated form of cholecystokinin-8

Target Details

may modulate neuronal activity in the brain. Alternative splicing results in multiple transcript variants.

UniProt: [P06307](#)

Pathways: [TCR Signaling](#), [Activation of Innate immune Response](#), [Cellular Response to Molecule of Bacterial Origin](#), [Positive Regulation of Immune Effector Process](#), [Positive Regulation of Endopeptidase Activity](#), [Toll-Like Receptors Cascades](#), [Feeding Behaviour](#)

Application Details

Application Notes: IHC 1:35-1:200, ELISA 1:5000-1:10000

Restrictions: For Research Use only

Handling

Format: Liquid

Concentration: 0.6 mg/mL

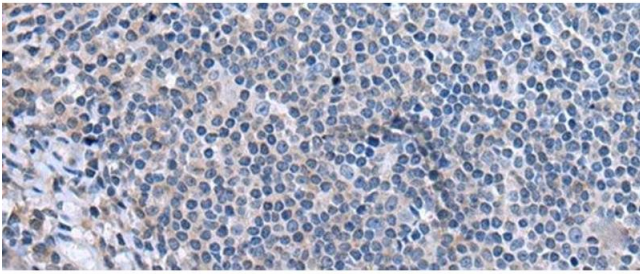
Buffer: PBS with 0.05 % Sodium azide and 40 % Glycerol, pH 7.4

Preservative: Sodium azide

Precaution of Use: This product contains Sodium azide: a POISONOUS AND HAZARDOUS SUBSTANCE which should be handled by trained staff only.

Storage: -20 °C

Storage Comment: Store at -20°C. Avoid freeze / thaw cycles.



Immunohistochemistry (Paraffin-embedded Sections)

Image 1. Immunohistochemistry of paraffin-embedded Human tonsil tissue using CCK Polyclonal Antibody at dilution of 1:55. (Original magnification: x200) at dilution of 1:55(x200)