

Datasheet for ABIN7251805

**anti-IL-1 beta antibody****3** Images[Go to Product page](#)

## Overview

Quantity:	200 µL
Target:	IL-1 beta (IL1B)
Reactivity:	Human
Host:	Rabbit
Clonality:	Polyclonal
Conjugate:	This IL-1 beta antibody is un-conjugated
Application:	Western Blotting (WB), ELISA, Immunohistochemistry (IHC)

## Product Details

Immunogen:	Fusion protein of human IL1B
Isotype:	IgG
Characteristics:	Polyclonal Antibody
Purification:	Antigen affinity purification

## Target Details

Target:	IL-1 beta (IL1B)
Alternative Name:	IL1B ( <a href="#">IL1B Products</a> )
Background:	The protein encoded by this gene is a member of the interleukin 1 cytokine family. This cytokine is produced by activated macrophages as a proprotein, which is proteolytically processed to its active form by caspase 1 (CASP1/ICE). This cytokine is an important mediator of the inflammatory response, and is involved in a variety of cellular activities, including cell

## Target Details

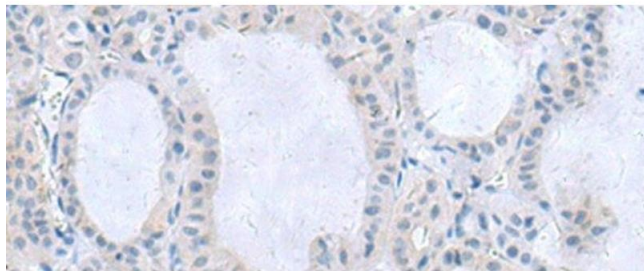
	proliferation, differentiation, and apoptosis. The induction of cyclooxygenase-2 (PTGS2/COX2) by this cytokine in the central nervous system (CNS) is found to contribute to inflammatory pain hypersensitivity. This gene and eight other interleukin 1 family genes form a cytokine gene cluster on chromosome 2.
Molecular Weight:	Observed_MW: Refer to figures Calculated_MW: 31 kDa
UniProt:	<a href="#">P01584</a>
Pathways:	<a href="#">NF-kappaB Signaling</a> , <a href="#">Interferon-gamma Pathway</a> , <a href="#">TLR Signaling</a> , <a href="#">Negative Regulation of Hormone Secretion</a> , <a href="#">Cellular Response to Molecule of Bacterial Origin</a> , <a href="#">Carbohydrate Homeostasis</a> , <a href="#">Glycosaminoglycan Metabolic Process</a> , <a href="#">Myometrial Relaxation and Contraction</a> , <a href="#">Regulation of Leukocyte Mediated Immunity</a> , <a href="#">Positive Regulation of Immune Effector Process</a> , <a href="#">Autophagy</a> , <a href="#">Cancer Immune Checkpoints</a> , <a href="#">Inflammasome</a>

## Application Details

Application Notes:	WB 1:1000-1:5000, IHC 1:50-1:100, ELISA 1:5000-1:10000
Restrictions:	For Research Use only

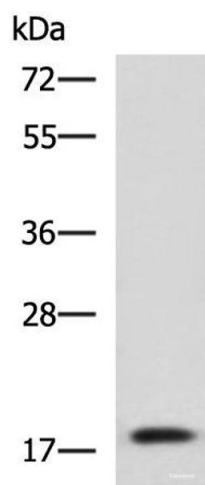
## Handling

Format:	Liquid
Concentration:	0.96 mg/mL
Buffer:	PBS with 0.05 % Sodium azide and 40 % Glycerol, pH 7.4
Preservative:	Sodium azide
Precaution of Use:	This product contains Sodium azide: a POISONOUS AND HAZARDOUS SUBSTANCE which should be handled by trained staff only.
Storage:	-20 °C
Storage Comment:	Store at -20°C. Avoid freeze / thaw cycles.



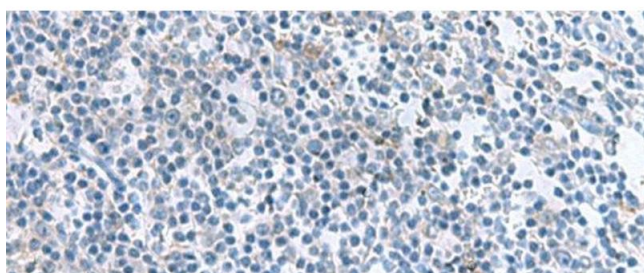
#### Immunohistochemistry (Paraffin-embedded Sections)

**Image 1.** Immunohistochemistry of paraffin-embedded Human thyroid cancer tissue using IL1B Polyclonal Antibody at dilution of 1:55(x200)



#### Western Blotting

**Image 2.** Western blot analysis of Human fetal liver tissue lysate using IL1B Polyclonal Antibody at dilution of 1:800



#### Immunohistochemistry (Paraffin-embedded Sections)

**Image 3.** Immunohistochemistry of paraffin-embedded Human tonsil tissue using IL1B Polyclonal Antibody at dilution of 1:55(x200)