

Datasheet for ABIN7251859

anti-ABI2 antibody[Go to Product page](#)**1** Image

Overview

Quantity:	200 µL
Target:	ABI2
Reactivity:	Human, Mouse
Host:	Rabbit
Clonality:	Polyclonal
Conjugate:	This ABI2 antibody is un-conjugated
Application:	Western Blotting (WB), ELISA

Product Details

Immunogen:	Fusion protein of human ABI2
Isotype:	IgG
Characteristics:	Polyclonal Antibody
Purification:	Antigen affinity purification

Target Details

Target:	ABI2
Alternative Name:	ABI2 (ABI2 Products)
Background:	<p>May act in regulation of cell growth and transformation by interacting with nonreceptor tyrosine kinases ABL1 and/or ABL2. Part of the WAVE complex that regulates lamellipodia formation.</p> <p>The WAVE complex regulates actin filament reorganization via its interaction with the Arp2/3 complex. Regulates ABL1/c-Abl-mediated phosphorylation of MENA. As component of the</p>

Target Details

	WAVE1 complex, required for BDNF-NTRK2 endocytic trafficking and signaling from early endosomes.
Molecular Weight:	Observed_MW: Refer to figures Calculated_MW: 56 kDa
UniProt:	Q9NYB9

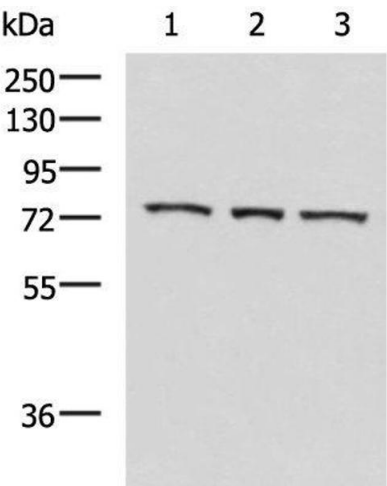
Application Details

Application Notes:	WB 1:500-1:2000, ELISA 1:5000-1:10000
Restrictions:	For Research Use only

Handling

Format:	Liquid
Concentration:	0.96 mg/mL
Buffer:	PBS with 0.05 % Sodium azide and 40 % Glycerol, pH 7.4
Preservative:	Sodium azide
Precaution of Use:	This product contains Sodium azide: a POISONOUS AND HAZARDOUS SUBSTANCE which should be handled by trained staff only.
Storage:	-20 °C
Storage Comment:	Store at -20°C. Avoid freeze / thaw cycles.

Images



Western Blotting

Image 1. Western blot analysis of K562 cell Mouse heart tissue Jurkat cell lysates using ABI2 Polyclonal Antibody at dilution of 1:550