

Datasheet for ABIN7251892

anti-Hepsin antibody**1** Image[Go to Product page](#)

Overview

Quantity:	200 µL
Target:	Hepsin (HPN)
Reactivity:	Human, Mouse, Rat
Host:	Rabbit
Clonality:	Polyclonal
Conjugate:	This Hepsin antibody is un-conjugated
Application:	ELISA, Western Blotting (WB)

Product Details

Immunogen:	Fusion protein of human HPN
Isotype:	IgG
Characteristics:	Polyclonal Antibody
Purification:	Antigen affinity purification

Target Details

Target:	Hepsin (HPN)
Alternative Name:	HPN (HPN Products)
Background:	<p>This gene encodes a type II transmembrane serine protease that may be involved in diverse cellular functions, including blood coagulation and the maintenance of cell morphology.</p> <p>Expression of the encoded protein is associated with the growth and progression of cancers, particularly prostate cancer. The protein is cleaved into a catalytic serine protease chain and a</p>

Target Details

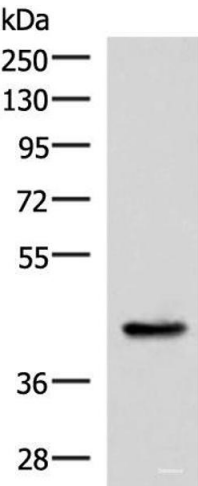
	non-catalytic scavenger receptor cysteine-rich chain, which associate via a single disulfide bond. Alternative splicing results in multiple transcript variants.
Molecular Weight:	Observed_MW: Refer to figures Calculated_MW: 45 kDa
UniProt:	P05981
Pathways:	Regulation of Hormone Metabolic Process , Sensory Perception of Sound

Application Details

Application Notes:	WB 1:500-1:2000, ELISA 1:5000-1:10000
Restrictions:	For Research Use only

Handling

Format:	Liquid
Concentration:	0.66 mg/mL
Buffer:	PBS with 0.05 % Sodium azide and 40 % Glycerol, pH 7.4
Preservative:	Sodium azide
Precaution of Use:	This product contains Sodium azide: a POISONOUS AND HAZARDOUS SUBSTANCE which should be handled by trained staff only.
Storage:	-20 °C
Storage Comment:	Store at -20°C. Avoid freeze / thaw cycles.



Western Blotting

Image 1. Western blot analysis of Mouse liver tissue lysate using HPN Polyclonal Antibody at dilution of 1:550