

Datasheet for ABIN7251895

anti-HSD11B1 antibody**2** Images[Go to Product page](#)

Overview

Quantity:	200 µL
Target:	HSD11B1
Reactivity:	Human
Host:	Rabbit
Clonality:	Polyclonal
Conjugate:	This HSD11B1 antibody is un-conjugated
Application:	ELISA, Immunohistochemistry (IHC)

Product Details

Immunogen:	Fusion protein of human HSD11B1
Isotype:	IgG
Characteristics:	Polyclonal Antibody
Purification:	Antigen affinity purification

Target Details

Target:	HSD11B1
Alternative Name:	HSD11B1 (HSD11B1 Products)
Background:	The protein encoded by this gene is a microsomal enzyme that catalyzes the conversion of the stress hormone cortisol to the inactive metabolite cortisone. In addition, the encoded protein can catalyze the reverse reaction, the conversion of cortisone to cortisol. Too much cortisol can lead to central obesity, and a particular variation in this gene has been associated with obesity

Target Details

and insulin resistance in children. Mutations in this gene and H6PD (hexose-6-phosphate dehydrogenase (glucose 1-dehydrogenase)) are the cause of cortisone reductase deficiency. Alternate splicing results in multiple transcript variants encoding the same protein.

UniProt: [P28845](#)

Pathways: [Metabolism of Steroid Hormones and Vitamin D](#), [Steroid Hormone Biosynthesis](#), [Regulation of Carbohydrate Metabolic Process](#)

Application Details

Application Notes: IHC 1:50-1:200, ELISA 1:5000-1:10000

Restrictions: For Research Use only

Handling

Format: Liquid

Concentration: 1.2 mg/mL

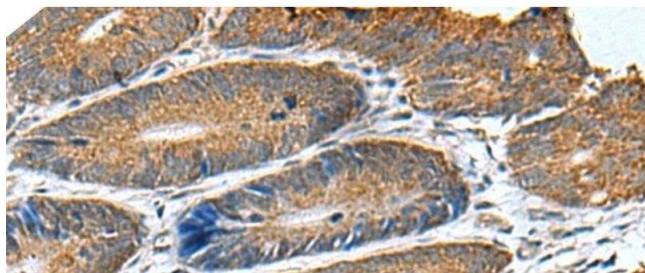
Buffer: PBS with 0.05 % Sodium azide and 40 % Glycerol, pH 7.4

Preservative: Sodium azide

Precaution of Use: This product contains Sodium azide: a POISONOUS AND HAZARDOUS SUBSTANCE which should be handled by trained staff only.

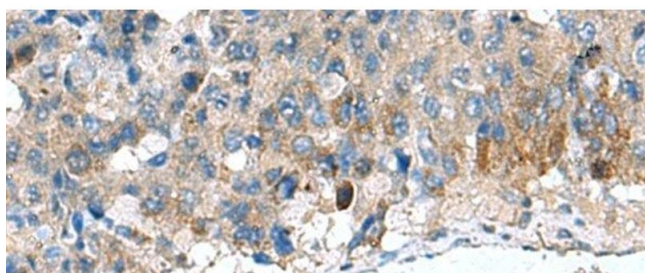
Storage: -20 °C

Storage Comment: Store at -20°C. Avoid freeze / thaw cycles.



Immunohistochemistry (Paraffin-embedded Sections)

Image 1. Immunohistochemistry of paraffin-embedded Human colorectal cancer tissue using HSD11B1 Polyclonal Antibody at dilution of 1:70(x200)



Immunohistochemistry (Paraffin-embedded Sections)

Image 2. Immunohistochemistry of paraffin-embedded Human liver cancer tissue using HSD11B1 Polyclonal Antibody at dilution of 1:70(x200)