

Datasheet for ABIN7251898

**anti-IL22RA2 antibody**[Go to Product page](#)**1** Image

## Overview

Quantity:	200 µL
Target:	IL22RA2
Reactivity:	Human
Host:	Rabbit
Clonality:	Polyclonal
Conjugate:	This IL22RA2 antibody is un-conjugated
Application:	ELISA, Immunohistochemistry (IHC)

## Product Details

Immunogen:	Fusion protein of human IL22RA2
Isotype:	IgG
Characteristics:	Polyclonal Antibody
Purification:	Antigen affinity purification

## Target Details

Target:	IL22RA2
Alternative Name:	IL22RA2 ( <a href="#">IL22RA2 Products</a> )
Background:	Interleukin-22 receptor subunit alpha-2 (IL22RA2) is a soluble member of the type II cytokine receptor family. Through binding to IL22, IL22RA2 prevents the interaction of IL22 with the functional IL22-R complex and blocks the activity of IL22 (in vitro). IL22RA2 may play an important role as an IL22 antagonist in the regulation of inflammatory responses. Alternative

## Target Details

splicing results in multiple transcript variants encoding distinct isoforms.

UniProt: [Q969J5](#)

## Application Details

Application Notes: IHC 1:50-1:200, ELISA 1:5000-1:10000

Restrictions: For Research Use only

## Handling

Format: Liquid

Concentration: 1.2 mg/mL

Buffer: PBS with 0.05 % Sodium azide and 40 % Glycerol, pH 7.4

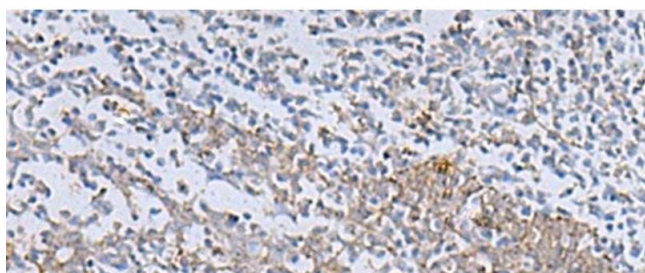
Preservative: Sodium azide

Precaution of Use: This product contains Sodium azide: a POISONOUS AND HAZARDOUS SUBSTANCE which should be handled by trained staff only.

Storage: -20 °C

Storage Comment: Store at -20°C. Avoid freeze / thaw cycles.

## Images



### Immunohistochemistry (Paraffin-embedded Sections)

**Image 1.** Immunohistochemistry of paraffin-embedded Human tonsil tissue using IL22RA2 Polyclonal Antibody at dilution of 1:70(x200)