

Datasheet for ABIN7251922

**anti-PTPRA antibody**[Go to Product page](#)**1** Image

## Overview

Quantity:	200 µL
Target:	PTPRA
Reactivity:	Human, Mouse, Rat
Host:	Rabbit
Clonality:	Polyclonal
Conjugate:	This PTPRA antibody is un-conjugated
Application:	Western Blotting (WB), ELISA

## Product Details

Immunogen:	Fusion protein of human PTPRA
Isotype:	IgG
Characteristics:	Polyclonal Antibody
Purification:	Antigen affinity purification

## Target Details

Target:	PTPRA
Alternative Name:	PTPRA ( <a href="#">PTPRA Products</a> )
Background:	The protein encoded by this gene is a member of the protein tyrosine phosphatase (PTP) family. PTPs are known to be signaling molecules that regulate a variety of cellular processes including cell growth, differentiation, mitotic cycle, and oncogenic transformation. This PTP contains an extracellular domain, a single transmembrane segment and two tandem

## Target Details

intracytoplasmic catalytic domains, and thus represents a receptor-type PTP. This PTP has been shown to dephosphorylate and activate Src family tyrosine kinases, and is implicated in the regulation of integrin signaling, cell adhesion and proliferation. Three alternatively spliced variants of this gene, which encode two distinct isoforms, have been reported.

Molecular Weight: Observed\_MW: Refer to figures  
Calculated\_MW: 91 kDa

UniProt: [P18433](#)

## Application Details

Application Notes: WB 1:500-1:2000, ELISA 1:5000-1:10000

Restrictions: For Research Use only

## Handling

Format: Liquid

Concentration: 0.6 mg/mL

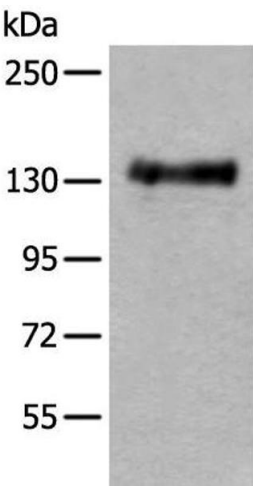
Buffer: PBS with 0.05 % Sodium azide and 40 % Glycerol, pH 7.4

Preservative: Sodium azide

Precaution of Use: This product contains Sodium azide: a POISONOUS AND HAZARDOUS SUBSTANCE which should be handled by trained staff only.

Storage: -20 °C

Storage Comment: Store at -20°C. Avoid freeze / thaw cycles.



Western Blotting

**Image 1.** Western blot analysis of Mouse brain tissue lysate using PTPRA Polyclonal Antibody at dilution of 1:400