



[Go to Product page](#)

Datasheet for ABIN7251949
anti-SERPINB4 antibody

1 Image

Overview

Quantity:	200 µL
Target:	SERPINB4
Reactivity:	Human
Host:	Rabbit
Clonality:	Polyclonal
Conjugate:	This SERPINB4 antibody is un-conjugated
Application:	ELISA, Immunohistochemistry (IHC)

Product Details

Immunogen:	Fusion protein of human SERPINB4
Isotype:	IgG
Characteristics:	Polyclonal Antibody
Purification:	Antigen affinity purification

Target Details

Target:	SERPINB4
Alternative Name:	SERPINB4 (SERPINB4 Products)
Background:	The protein encoded by this gene is a member of the serpin family of serine protease inhibitors. The encoded protein is highly expressed in many tumor cells and can inactivate granzyme M, an enzyme that kills tumor cells. This protein, along with serpin B3, can be processed into smaller fragments that aggregate to form an autoantigen in psoriasis, probably by causing

Target Details

chronic inflammation. SERPINB4 (Serpin Family B Member 4) is a Protein Coding gene. Diseases associated with SERPINB4 include Squamous Cell Carcinoma and Chromosome 18Q Deletion Syndrome. Among its related pathways are Amoebiasis. GO annotations related to this gene include enzyme binding and protease binding. An important paralog of this gene is SERPINB3.

UniProt: [P48594](#)

Application Details

Application Notes: IHC 1:50-1:100, ELISA 1:5000-1:10000

Restrictions: For Research Use only

Handling

Format: Liquid

Concentration: 0.72 mg/mL

Buffer: PBS with 0.05 % Sodium azide and 40 % Glycerol, pH 7.4

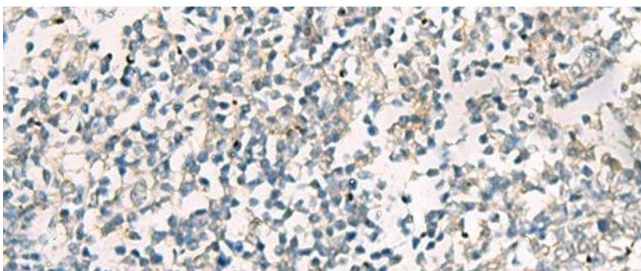
Preservative: Sodium azide

Precaution of Use: This product contains Sodium azide: a POISONOUS AND HAZARDOUS SUBSTANCE which should be handled by trained staff only.

Storage: -20 °C

Storage Comment: Store at -20°C. Avoid freeze / thaw cycles.

Images



Immunohistochemistry (Paraffin-embedded Sections)

Image 1. Immunohistochemistry of paraffin-embedded Human tonsil tissue using SERPINB4 Polyclonal Antibody at dilution of 1:40(x200)