



[Go to Product page](#)

Datasheet for ABIN7251967

## anti-SPRY4 antibody

### 2 Images

#### Overview

Quantity:	200 µL
Target:	SPRY4
Reactivity:	Human, Mouse
Host:	Rabbit
Clonality:	Polyclonal
Conjugate:	This SPRY4 antibody is un-conjugated
Application:	Western Blotting (WB), ELISA, Immunohistochemistry (IHC)

#### Product Details

Immunogen:	Full length fusion protein
Isotype:	IgG
Characteristics:	Polyclonal Antibody
Purification:	Antigen affinity purification

#### Target Details

Target:	SPRY4
Alternative Name:	SPRY4 ( <a href="#">SPRY4 Products</a> )
Background:	This gene encodes a member of a family of cysteine- and proline-rich proteins. The encoded protein is an inhibitor of the receptor-transduced mitogen-activated protein kinase (MAPK) signaling pathway. Activity of this protein impairs the formation of active GTP-RAS. Nucleotide variation in this gene has been associated with hypogonadotropic hypogonadism 17 with or

## Target Details

without anosmia. Alternative splicing results in a multiple transcript variants.

Molecular Weight: Observed\_MW: Refer to figures  
Calculated\_MW: 33 kDa

UniProt: [Q9C004](#)

## Application Details

Application Notes: WB 1:500-1:2000, IHC 1:25-1:100, ELISA 1:5000-1:10000

Restrictions: For Research Use only

## Handling

Format: Liquid

Concentration: 0.8 mg/mL

Buffer: PBS with 0.05 % Sodium azide and 40 % Glycerol, pH 7.4

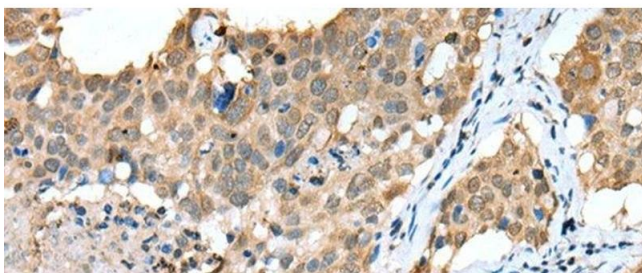
Preservative: Sodium azide

Precaution of Use: This product contains Sodium azide: a POISONOUS AND HAZARDOUS SUBSTANCE which should be handled by trained staff only.

Storage: -20 °C

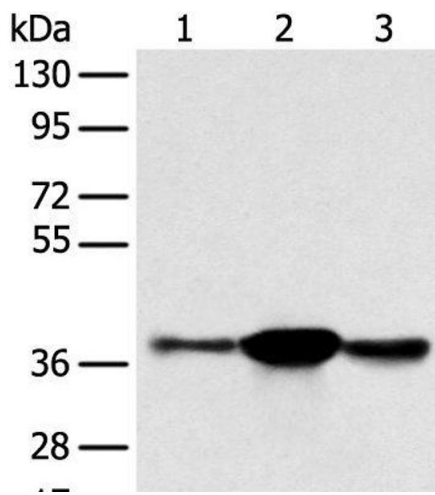
Storage Comment: Store at -20°C. Avoid freeze / thaw cycles.

## Images



### Immunohistochemistry (Paraffin-embedded Sections)

**Image 1.** Immunohistochemistry of paraffin-embedded Human lung cancer tissue using SPRY4 Polyclonal Antibody at dilution of 1:25(x200)



### Western Blotting

**Image 2.** Western blot analysis of K562 A375 and 231 cell using SPRY4 Polyclonal Antibody at dilution of 1:400