

Datasheet for ABIN7251973

anti-THAP10 antibody[Go to Product page](#)**1** Image

Overview

Quantity:	200 µL
Target:	THAP10
Reactivity:	Human
Host:	Rabbit
Clonality:	Polyclonal
Conjugate:	This THAP10 antibody is un-conjugated
Application:	ELISA, Immunohistochemistry (IHC)

Product Details

Immunogen:	Full length fusion protein
Isotype:	IgG
Characteristics:	Polyclonal Antibody
Purification:	Antigen affinity purification

Target Details

Target:	THAP10
Alternative Name:	THAP10 (THAP10 Products)
Background:	This gene encodes a member of a family of proteins sharing an N-terminal Thanatos-associated domain. The Thanatos-associated domain contains a zinc finger signature similar to DNA-binding domains. This gene is part of a bidirectional gene pair on the long arm of chromosome 15 that is regulated by estrogen and may play a role in breast cancer.

Target Details

UniProt: [Q9P2Z0](#)

Application Details

Application Notes: IHC 1:30-1:150, ELISA 1:5000-1:10000

Restrictions: For Research Use only

Handling

Format: Liquid

Concentration: 0.8 mg/mL

Buffer: PBS with 0.05 % Sodium azide and 40 % Glycerol, pH 7.4

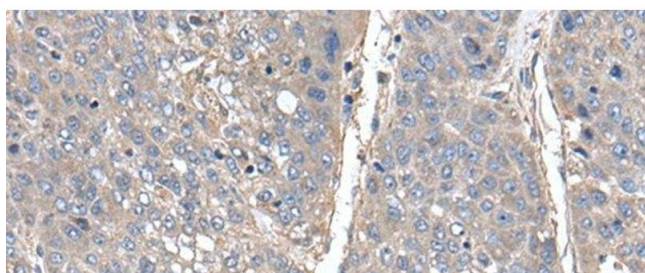
Preservative: Sodium azide

Precaution of Use: This product contains Sodium azide: a POISONOUS AND HAZARDOUS SUBSTANCE which should be handled by trained staff only.

Storage: -20 °C

Storage Comment: Store at -20°C. Avoid freeze / thaw cycles.

Images



Immunohistochemistry (Paraffin-embedded Sections)

Image 1. Immunohistochemistry of paraffin-embedded Human liver cancer tissue using THAP10 Polyclonal Antibody at dilution of 1:40(x200)