

Datasheet for ABIN7252000 **anti-WFDC5 antibody**

3 Images



[Go to Product page](#)

Overview

Quantity:	200 µL
Target:	WFDC5
Reactivity:	Mouse, Human
Host:	Rabbit
Clonality:	Polyclonal
Conjugate:	This WFDC5 antibody is un-conjugated
Application:	Western Blotting (WB), Immunohistochemistry (IHC), ELISA

Product Details

Immunogen:	Fusion protein of human WFDC5
Isotype:	IgG
Characteristics:	Polyclonal Antibody
Purification:	Antigen affinity purification

Target Details

Target:	WFDC5
Alternative Name:	WFDC5 (WFDC5 Products)
Background:	This gene encodes a member of the WAP-type four-disulfide core (WFDC) domain family. Most WFDC proteins contain only one WFDC domain, and this encoded protein contains two WFDC domains. The WFDC domain, or WAP signature motif, contains eight cysteines forming four disulfide bonds at the core of the protein, and functions as a protease inhibitor. Most WFDC

Target Details

gene members are localized to chromosome 20q12-q13 in two clusters: centromeric and telomeric. This gene belongs to the centromeric cluster.

Molecular Weight: Observed_MW: Refer to figures
Calculated_MW: 24 kDa

UniProt: [Q8TCV5](#)

Application Details

Application Notes: WB 1:1000-1:5000, IHC 1:45-1:300, ELISA 1:2000-1:10000

Restrictions: For Research Use only

Handling

Format: Liquid

Concentration: 1.5 mg/mL

Buffer: PBS with 0.05 % Sodium azide and 40 % Glycerol, pH 7.4

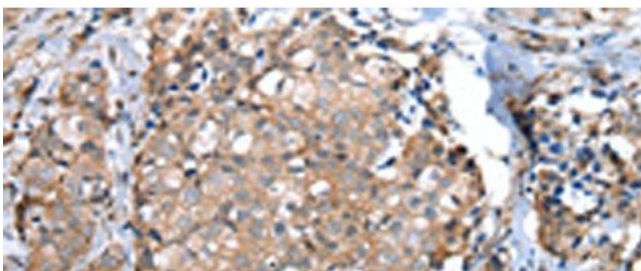
Preservative: Sodium azide

Precaution of Use: This product contains Sodium azide: a POISONOUS AND HAZARDOUS SUBSTANCE which should be handled by trained staff only.

Storage: -20 °C

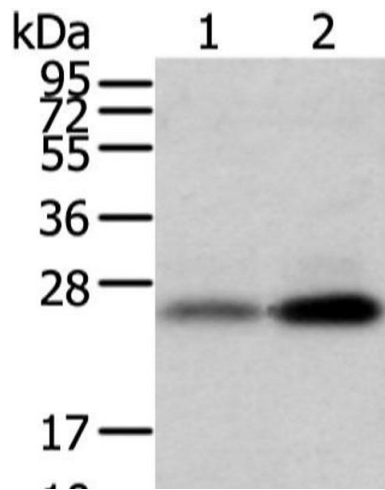
Storage Comment: Store at -20°C. Avoid freeze / thaw cycles.

Images



Immunohistochemistry (Paraffin-embedded Sections)

Image 1. Immunohistochemistry of paraffin-embedded Human breast cancer tissue using WFDC5 Polyclonal Antibody at dilution of 1:60(x200)



Western Blotting

Image 2. Western blot analysis of Mouse trachea and brain tissue using WFDC5 Polyclonal Antibody at dilution of 1:1100

Immunohistochemistry (Paraffin-embedded Sections)

Image 3. Immunohistochemistry of paraffin-embedded Human lung cancer tissue using WFDC5 Polyclonal Antibody at dilution of 1:60(x200)

