



[Go to Product page](#)

Datasheet for ABIN7252036

## anti-DYNLL2 antibody

### 1 Image

#### Overview

Quantity:	200 µL
Target:	DYNLL2
Reactivity:	Human, Mouse, Rat
Host:	Rabbit
Clonality:	Polyclonal
Conjugate:	This DYNLL2 antibody is un-conjugated
Application:	ELISA, Western Blotting (WB)

#### Product Details

Immunogen:	Full length fusion protein
Isotype:	IgG
Characteristics:	Polyclonal Antibody
Purification:	Antigen affinity purification

#### Target Details

Target:	DYNLL2
Alternative Name:	DYNLL2 ( <a href="#">DYNLL2 Products</a> )
Background:	Dynein light chain 2, cytoplasmic is a protein that in humans is encoded by the DYNLL2 gene. Acts as one of several non-catalytic accessory components of the cytoplasmic dynein 1 complex that are thought to be involved in linking dynein to cargos and to adapter proteins that regulate dynein function. Cytoplasmic dynein 1 acts as a motor for the intracellular retrograde motility of

## Target Details

vesicles and organelles along microtubules.

Molecular Weight: Observed\_MW: Refer to figures  
Calculated\_MW: 10 kDa

UniProt: [Q96FJ2](#)

Pathways: [M Phase](#)

## Application Details

Application Notes: WB 1:500-1:2000, ELISA 1:2000-1:5000

Restrictions: For Research Use only

## Handling

Format: Liquid

Concentration: 0.7 mg/mL

Buffer: PBS with 0.05 % Sodium azide and 40 % Glycerol, pH 7.4

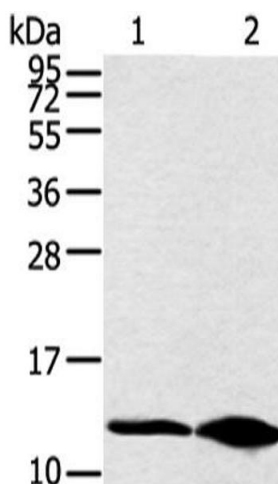
Preservative: Sodium azide

Precaution of Use: This product contains Sodium azide: a POISONOUS AND HAZARDOUS SUBSTANCE which should be handled by trained staff only.

Storage: -20 °C

Storage Comment: Store at -20°C. Avoid freeze / thaw cycles.

## Images



### Western Blotting

**Image 1.** Western blot analysis of HeLa cell and human fetal brain tissue using DYNLL2 Polyclonal Antibody at dilution of 1:250