

Datasheet for ABIN7252042

**anti-S100A16 antibody**

3 Images

[Go to Product page](#)

## Overview

Quantity:	200 µL
Target:	S100A16
Reactivity:	Human
Host:	Rabbit
Clonality:	Polyclonal
Conjugate:	This S100A16 antibody is un-conjugated
Application:	Western Blotting (WB), ELISA, Immunohistochemistry (IHC)

## Product Details

Immunogen:	Full length fusion protein
Isotype:	IgG
Characteristics:	Polyclonal Antibody
Purification:	Antigen affinity purification

## Target Details

Target:	S100A16
Alternative Name:	S100A16 ( <a href="#">S100A16 Products</a> )
Background:	S100A16 (S100 Calcium Binding Protein A16) is a Protein Coding gene. Diseases associated with S100A16 include Robinow Syndrome, Autosomal Recessive and Robinow Syndrome. Gene Ontology (GO) annotations related to this gene include protein homodimerization activity.

## Target Details

Molecular Weight: Observed\_MW: Refer to figures  
Calculated\_MW: 12 kDa

UniProt: [Q96FQ6](#)

Pathways: [S100 Proteins](#)

## Application Details

Application Notes: WB 1:500-1:2000, IHC 1:25-1:100, ELISA 1:5000-1:10000

Restrictions: For Research Use only

## Handling

Format: Liquid

Concentration: 0.5 mg/mL

Buffer: PBS with 0.05 % Sodium azide and 40 % Glycerol, pH 7.4

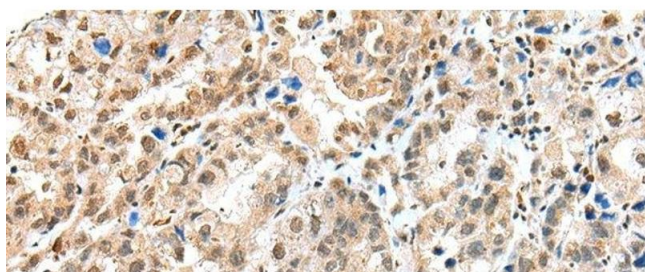
Preservative: Sodium azide

Precaution of Use: This product contains Sodium azide: a POISONOUS AND HAZARDOUS SUBSTANCE which should be handled by trained staff only.

Storage: -20 °C

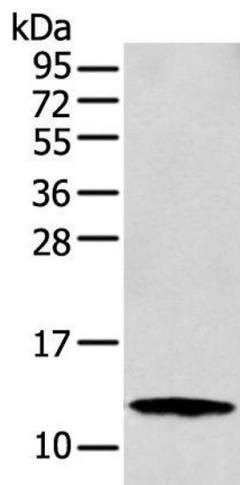
Storage Comment: Store at -20°C. Avoid freeze / thaw cycles.

## Images



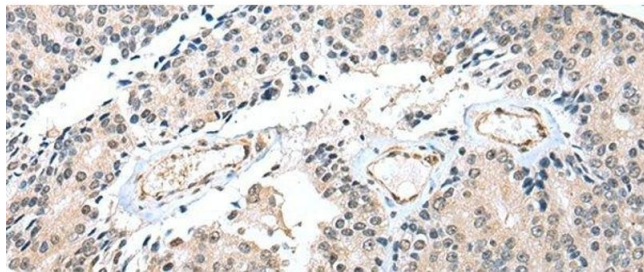
### Immunohistochemistry (Paraffin-embedded Sections)

**Image 1.** Immunohistochemistry of paraffin-embedded Human ovarian cancer tissue using S100A16 Polyclonal Antibody at dilution of 1:25(x200)



#### Western Blotting

**Image 2.** Western blot analysis of MCF-7 cell using S100A16 Polyclonal Antibody at dilution of 1:300



#### Immunohistochemistry (Paraffin-embedded Sections)

**Image 3.** Immunohistochemistry of paraffin-embedded Human prostate cancer tissue using S100A16 Polyclonal Antibody at dilution of 1:25(x200)