

Datasheet for ABIN7252060

anti-LRRC19 antibody

3 Images

[Go to Product page](#)

Overview

Quantity:	200 µL
Target:	LRRC19
Reactivity:	Human, Mouse
Host:	Rabbit
Clonality:	Polyclonal
Conjugate:	This LRRC19 antibody is un-conjugated
Application:	ELISA, Western Blotting (WB), Immunohistochemistry (IHC)

Product Details

Immunogen:	Fusion protein of human LRRC19
Isotype:	IgG
Characteristics:	Polyclonal Antibody
Purification:	Antigen affinity purification

Target Details

Target:	LRRC19
Alternative Name:	LRRC19 (LRRC19 Products)
Background:	LRRC19 is a member of the extracellular leucine-rich repeat superfamily, a family of proteins that are thought to have diverse functions such as cell adhesion, signaling, and innate immunity. LRRC19 is closely related to the Toll-like receptors (TLRs), especially TLR3. LRRC19 does not contain a cytoplasmic Toll/IL-1 receptor (TIR) domain, but can activate NF-kappaB

Target Details

and induce the production of proinflammatory cytokines after stimulation with the TLR3 and other TLR ligands, suggesting that LRRC19 may play a role in the recognition and the response to certain pathogenic microorganisms. LRRC19 has also been suggested to be a potential biomarker for pancreatic tumor sensitivity to the anti-cancer, small molecule Src inhibitor AZD0530.

Molecular Weight: Observed_MW: Refer to figures
Calculated_MW: 42 kDa

UniProt: [Q9H756](#)

Application Details

Application Notes: WB 1:500-1:2000, IHC 1:25-1:100, ELISA 1:5000-1:10000

Restrictions: For Research Use only

Handling

Format: Liquid

Concentration: 1.1 mg/mL

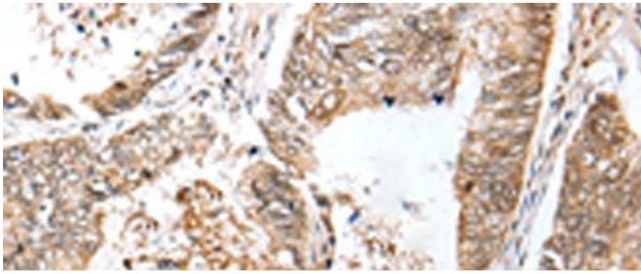
Buffer: PBS with 0.05 % Sodium azide and 40 % Glycerol, pH 7.4

Preservative: Sodium azide

Precaution of Use: This product contains Sodium azide: a POISONOUS AND HAZARDOUS SUBSTANCE which should be handled by trained staff only.

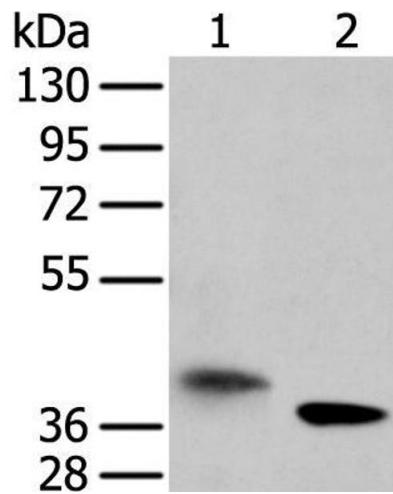
Storage: -20 °C

Storage Comment: Store at -20°C. Avoid freeze / thaw cycles.



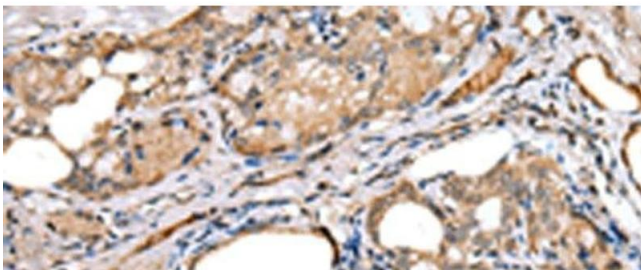
Immunohistochemistry (Paraffin-embedded Sections)

Image 1. Immunohistochemistry of paraffin-embedded Human colorectal cancer tissue using LRRC19 Polyclonal Antibody at dilution of 1:30(x200)



Western Blotting

Image 2. Western blot analysis of A172 cell and mouse kidney tissue using LRRC19 Polyclonal Antibody at dilution of 1:450



Immunohistochemistry (Paraffin-embedded Sections)

Image 3. Immunohistochemistry of paraffin-embedded Human thyroid cancer tissue using LRRC19 Polyclonal Antibody at dilution of 1:30(x200)