

Datasheet for ABIN7252069

anti-SPACA3 antibody[Go to Product page](#)**1** Image

Overview

Quantity:	200 µL
Target:	SPACA3
Reactivity:	Human
Host:	Rabbit
Clonality:	Polyclonal
Conjugate:	This SPACA3 antibody is un-conjugated
Application:	ELISA, Immunohistochemistry (IHC)

Product Details

Immunogen:	Full length fusion protein
Isotype:	IgG
Characteristics:	Polyclonal Antibody
Purification:	Antigen affinity purification

Target Details

Target:	SPACA3
Alternative Name:	SPACA3 (SPACA3 Products)
Background:	SPACA3 (sperm acrosome associated 3), also known as sperm lysozyme-like protein 1, lysozyme-like protein 3, lysozyme-like acrosomal sperm-specific secretory protein ALLP-17, cancer/testis antigen 54 (CT54), LYC3, SPRASA or LYZL3, is a 215 amino acid protein that participates in the fusion and adhesion of sperm and egg plasma membrane during

Target Details

fertilization. Identified as a novel cancer/testis antigen in hematologic malignancies, SPACA3 has the ability to elicit B-cell immune responses in patients with cancer and is considered a potential target for immunotherapy. A member of the glycosyl hydrolase 22 family which is expressed in testis, placenta and epididymis, SPACA3 exists as two alternatively spliced isoforms, SPACA3 isoform 1 is a single-pass type II membrane protein of the sperm acrosome whereas SPACA3 isoform 2 is a secreted protein. Sperm surface membrane protein that may be involved in sperm-egg plasma membrane adhesion and fusion during fertilization. It could be a potential receptor for the egg oligosaccharide residue N-acetylglucosamine, which is present in the extracellular matrix over the egg plasma membrane. The processed form has no detectable bacteriolytic activity in vitro.

UniProt: [Q8IXA5](#)

Pathways: [Glycosaminoglycan Metabolic Process](#)

Application Details

Application Notes: IHC 1:30-1:150, ELISA 1:5000-1:10000

Restrictions: For Research Use only

Handling

Format: Liquid

Concentration: 1.5 mg/mL

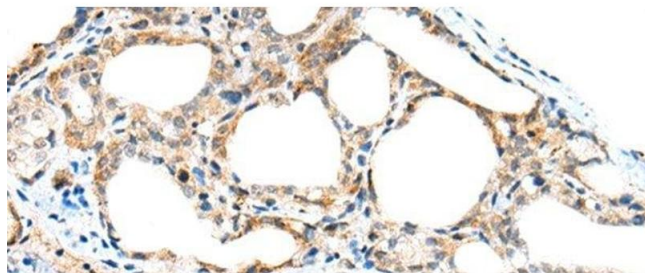
Buffer: PBS with 0.05 % Sodium azide and 40 % Glycerol, pH 7.4

Preservative: Sodium azide

Precaution of Use: This product contains Sodium azide: a POISONOUS AND HAZARDOUS SUBSTANCE which should be handled by trained staff only.

Storage: -20 °C

Storage Comment: Store at -20°C. Avoid freeze / thaw cycles.



Immunohistochemistry (Paraffin-embedded Sections)

Image 1. Immunohistochemistry of paraffin-embedded Human thyroid cancer tissue using SPACA3 Polyclonal Antibody at dilution of 1:45(x200)