

Datasheet for ABIN7252075  
**anti-CNPY2/MSAP antibody**[Go to Product page](#)

## 3 Images

## Overview

|              |  |
|--------------|--|
| Quantity:    | 200 µL   |
| Target:      | CNPY2/MSAP (CNPY2)                                       |
| Reactivity:  | Human, Mouse   |
| Host:        | Rabbit   |
| Clonality:   | Polyclonal   |
| Conjugate:   | This CNPY2/MSAP antibody is un-conjugated                |
| Application: | Western Blotting (WB), ELISA, Immunohistochemistry (IHC) |

## Product Details

|                  |                               |
|------------------|-------------------------------|
| Immunogen:       | Full length fusion protein    |
| Isotype:         | IgG                           |
| Characteristics: | Polyclonal Antibody           |
| Purification:    | Antigen affinity purification |

## Target Details

|                   |   |
|-------------------|---|
| Target:           | CNPY2/MSAP (CNPY2)  |
| Alternative Name: | CNPY2 ( <a href="#">CNPY2 Products</a> )  |
| Background:       | CNPY2,also named as MSAP,TMEM4 and ZSIG9,is a positive regulator of neurite outgrowth. It interacts with the ezrin-radixin-moesin (ERM)-like myosin regulatory light chain-interacting protein (MIR),and the two proteins are co-localized in cell lines and in primary neurons. CNPY2 can stabilize MRLC and thus bring about an increase in neurite outgrowth. This antibody is |

## Target Details

specific to CNPY2

Molecular Weight: Observed\_MW: Refer to figures  
Calculated\_MW: 21 kDa

UniProt: [Q9Y2B0](#)

## Application Details

Application Notes: WB 1:500-1:2000, IHC 1:25-1:100, ELISA 1:5000-1:10000

Restrictions: For Research Use only

## Handling

Format: Liquid

Concentration: 0.9 mg/mL

Buffer: PBS with 0.05 % Sodium azide and 40 % Glycerol, pH 7.4

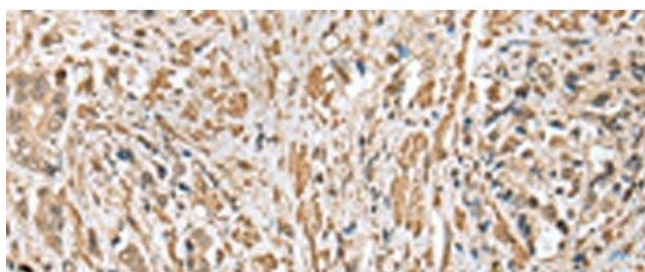
Preservative: Sodium azide

Precaution of Use: This product contains Sodium azide: a POISONOUS AND HAZARDOUS SUBSTANCE which should be handled by trained staff only.

Storage: -20 °C

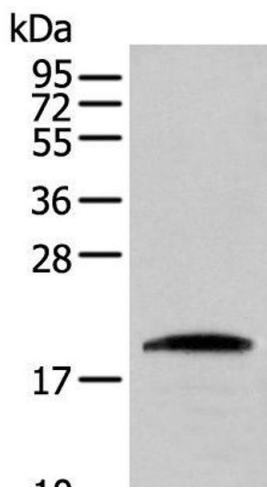
Storage Comment: Store at -20°C. Avoid freeze / thaw cycles.

## Images



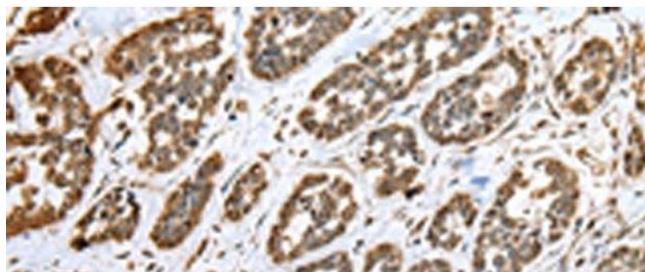
### Immunohistochemistry (Paraffin-embedded Sections)

**Image 1.** Immunohistochemistry of paraffin-embedded Human prostate cancer tissue using CNPY2 Polyclonal Antibody at dilution of 1:25(x200)



#### Western Blotting

**Image 2.** Western blot analysis of HEPG2 cell using CNPY2 Polyclonal Antibody at dilution of 1:300



#### Immunohistochemistry (Paraffin-embedded Sections)

**Image 3.** Immunohistochemistry of paraffin-embedded Human esophagus cancer tissue using CNPY2 Polyclonal Antibody at dilution of 1:25(x200)