



[Go to Product page](#)

Datasheet for ABIN7252078

anti-DHR SX antibody

3 Images

Overview

Quantity:	200 µL
Target:	DHR SX
Reactivity:	Human
Host:	Rabbit
Clonality:	Polyclonal
Conjugate:	This DHR SX antibody is un-conjugated
Application:	ELISA, Western Blotting (WB), Immunohistochemistry (IHC)

Product Details

Immunogen:	Fusion protein of human DHR SX
Isotype:	IgG
Characteristics:	Polyclonal Antibody
Purification:	Antigen affinity purification

Target Details

Target:	DHR SX
Alternative Name:	DHR SX (DHR SX Products)
Background:	DHR SX (dehydrogenase/reductase SDR family member on chromosome X) is a 330 amino acid protein belonging to the short-chain dehydrogenases/reductases (SDR) family. Widely expressed, DHR SX is an oxidoreductase that contains a coenzyme binding site and a substrate binding site, indicating a possible role in cellular metabolism. The gene that encodes DHR SX is

Target Details

located in the pseudoautosomal region 1 (PAR1) of X and Y chromosomes. The X and Y chromosomes are the human sex chromosomes. Chromosome X consists of about 153 million base pairs and nearly 1,000 genes.

Molecular Weight: Observed_MW: Refer to figures
Calculated_MW: 36 kDa

UniProt: [Q8N5I4](#)

Application Details

Application Notes: WB 1:500-1:2000, IHC 1:25-1:100, ELISA 1:5000-1:10000

Restrictions: For Research Use only

Handling

Format: Liquid

Concentration: 0.9 mg/mL

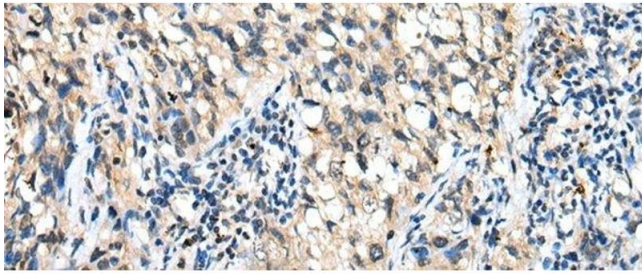
Buffer: PBS with 0.05 % Sodium azide and 40 % Glycerol, pH 7.4

Preservative: Sodium azide

Precaution of Use: This product contains Sodium azide: a POISONOUS AND HAZARDOUS SUBSTANCE which should be handled by trained staff only.

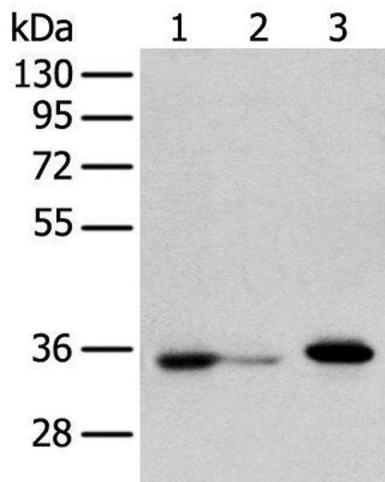
Storage: -20 °C

Storage Comment: Store at -20°C. Avoid freeze / thaw cycles.



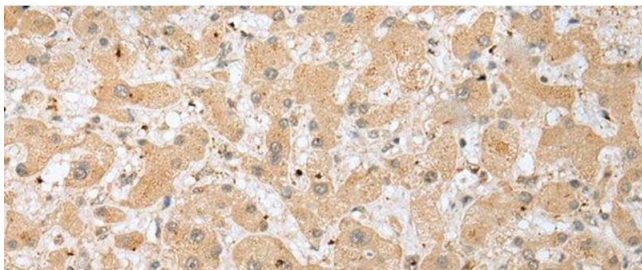
Immunohistochemistry (Paraffin-embedded Sections)

Image 1. Immunohistochemistry of paraffin-embedded Human lung cancer tissue using DHRSX Polyclonal Antibody at dilution of 1:30(x200)



Western Blotting

Image 2. Western blot analysis of HepG2 cell Hela cell and A549 cell using DHRSX Polyclonal Antibody at dilution of 1:350



Immunohistochemistry (Paraffin-embedded Sections)

Image 3. Immunohistochemistry of paraffin-embedded Human liver cancer tissue using DHRSX Polyclonal Antibody at dilution of 1:30(x200)