

Datasheet for ABIN725210  
**anti-ESR2 antibody (AA 201-300)**[Go to Product page](#)

3 Images

2 Publications

## Overview

Quantity:	100 µL
Target:	ESR2
Binding Specificity:	AA 201-300
Reactivity:	Human, Mouse, Rat, Sheep
Host:	Rabbit
Clonality:	Polyclonal
Conjugate:	This ESR2 antibody is un-conjugated
Application:	Western Blotting (WB), ELISA, Flow Cytometry (FACS), Immunohistochemistry (Paraffin-embedded Sections) (IHC (p)), Immunofluorescence (Paraffin-embedded Sections) (IF (p)), Immunofluorescence (Cultured Cells) (IF (cc)), Immunohistochemistry (Frozen Sections) (IHC (fro))

## Product Details

Immunogen:	KLH conjugated synthetic peptide derived from human ER-beta
Isotype:	IgG
Cross-Reactivity:	Human, Mouse, Rat, Sheep
Predicted Reactivity:	Cow,Pig
Purification:	Purified by Protein A.

## Target Details

Target:	ESR2
---------	------

## Target Details

Alternative Name:	Estrogen receptor beta ( <a href="#">ESR2 Products</a> )
Background:	<p>Synonyms: Erb, ESRB, ESTRB, NR3A2, ER-BETA, ESR-BETA, Estrogen receptor beta, Nuclear receptor subfamily 3 group A member 2, ESR2</p> <p>Background: Nuclear hormone receptor. Binds estrogens with an affinity similar to that of ESR1, and activates expression of reporter genes containing estrogen response elements (ERE) in an estrogen-dependent manner. Isoform beta-cx lacks ligand binding ability and has no or only very low ere binding activity resulting in the loss of ligand-dependent transactivation ability. DNA-binding by ESR1 and ESR2 is rapidly lost at 37 degrees Celsius in the absence of ligand while in the presence of 17 beta-estradiol and 4-hydroxy-tamoxifen loss in DNA-binding at elevated temperature is more gradual.</p>
Gene ID:	2100
UniProt:	<a href="#">Q92731</a>
Pathways:	<a href="#">Nuclear Receptor Transcription Pathway</a> , <a href="#">EGFR Signaling Pathway</a> , <a href="#">Intracellular Steroid Hormone Receptor Signaling Pathway</a> , <a href="#">Steroid Hormone Mediated Signaling Pathway</a> , <a href="#">Regulation of Intracellular Steroid Hormone Receptor Signaling</a>

## Application Details

Application Notes:	WB 1:300-5000 ELISA 1:500-1000 FCM 1:20-100 IHC-P 1:200-400 IHC-F 1:100-500 IF(IHC-P) 1:50-200 IF(IHC-F) 1:50-200 IF(ICC) 1:50-200
Restrictions:	For Research Use only

## Handling

Format:	Liquid
Concentration:	1 µg/µL
Buffer:	0.01M TBS( pH 7.4) with 1 % BSA, 0.02 % Proclin300 and 50 % Glycerol.
Preservative:	ProClin

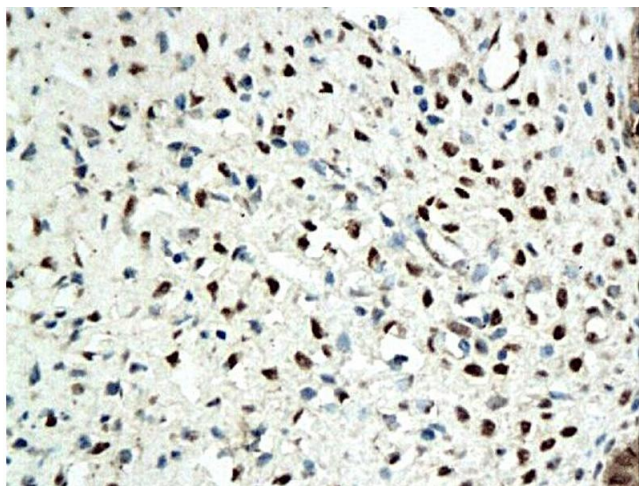
## Handling

Precaution of Use:	This product contains ProClin: a POISONOUS AND HAZARDOUS SUBSTANCE, which should be handled by trained staff only.
Storage:	4 °C, -20 °C
Storage Comment:	Shipped at 4°C. Store at -20°C for one year. Avoid repeated freeze/thaw cycles.
Expiry Date:	12 months

## Publications

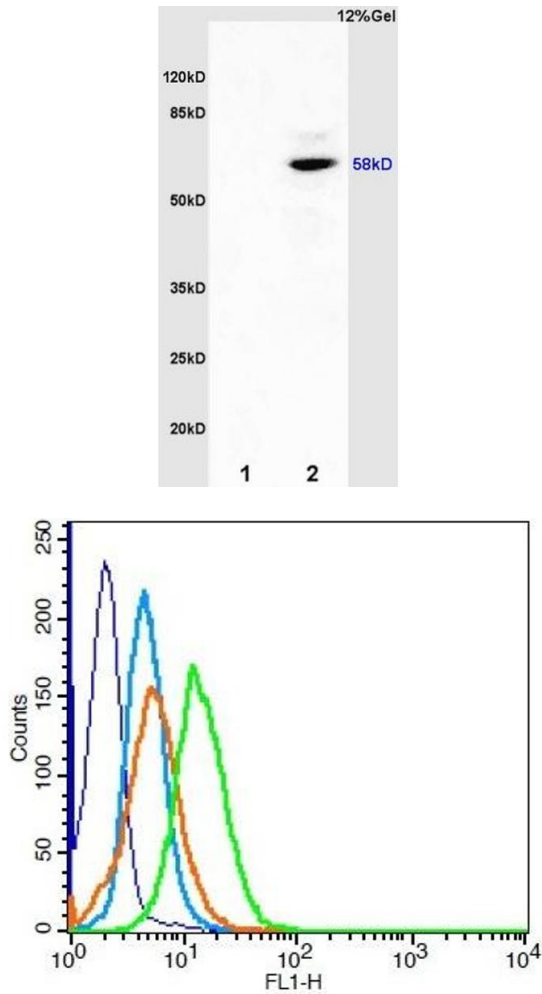
Product cited in:	<p>Wei, Guo, Mu, Zhang, Zhao, Huai, Qiu, Li, Ma, Liu, Chen, Han: "Estrogen suppresses hepatocellular carcinoma cells through ER<math>\beta</math>-mediated upregulation of the NLRP3 inflammasome." in: <b>Laboratory investigation; a journal of technical methods and pathology</b>, Vol. 95, Issue 7, pp. 804-16, (2015) (<a href="#">PubMed</a>).</p> <p>Fang, Wu, Huang: "Raloxifene upregulated mesangial cell MMP-2 activity via ER-<math>\alpha</math> through transcriptional regulation." in: <b>Cell biochemistry and biophysics</b>, Vol. 67, Issue 2, pp. 607-13, (2013) (<a href="#">PubMed</a>).</p>
-------------------	---

## Images



### Immunohistochemistry

**Image 1.** Formalin-fixed and paraffin embedded rat ovary tissue labeled with Anti-ER beta Polyclonal Antibody, Unconjugated (ABIN725210), followed by conjugation to the secondary antibody and DAB staining



SDS-PAGE

**Image 2.** L1 mouse kidney lysates L2 mouse brain lysates probed with Anti ER-beta Polyclonal Antibody, Unconjugated (ABIN725210) at 1:200 overnight at 4 °C. Followed by conjugation to secondary antibody at 1:3000. Predicted band 58kD. Observed band size: 58kD

Flow Cytometry

**Image 3.** HeLa cells probed with Estrogen receptor beta Polyclonal Antibody, Unconjugated at 1:100 for 30 minutes followed by incubation with a conjugated secondary -PE) (green) for 30 minutes compared to control cells (blue), secondary only (light blue) and isotype control (orange).