

Datasheet for ABIN725225
anti-TGFBR2 antibody (AA 241-330)[3 Images](#)[4 Publications](#)[Go to Product page](#)

Overview

Quantity:	100 µL
Target:	TGFBR2
Binding Specificity:	AA 241-330
Reactivity:	Human, Mouse, Rat, Rabbit, Cow
Host:	Rabbit
Clonality:	Polyclonal
Conjugate:	This TGFBR2 antibody is un-conjugated
Application:	Western Blotting (WB), ELISA, Immunohistochemistry (Paraffin-embedded Sections) (IHC (p)), Immunofluorescence (Cultured Cells) (IF (cc)), Immunofluorescence (Paraffin-embedded Sections) (IF (p)), Flow Cytometry (FACS), Immunohistochemistry (Frozen Sections) (IHC (fro))

Product Details

Immunogen:	KLH conjugated synthetic peptide derived from human TGF beta R2
Isotype:	IgG
Cross-Reactivity:	Cow, Human, Mouse, Rabbit, Rat
Predicted Reactivity:	Sheep,Pig,Horse,Chicken
Purification:	Purified by Protein A.

Target Details

Target:	TGFBR2
---------	--------

Target Details

Alternative Name:	TGF beta Receptor 2 (TGFB2 Products)
Background:	<p>Synonyms: AAT3, FAA3, LDS2, MFS2, RIIC, LDS1B, LDS2B, TAAD2, TGFR-2, TGFbeta-RII, TGF-beta receptor type-2, TGF-beta type II receptor, Transforming growth factor-beta receptor type II, TGF-beta receptor type II, TbetaR-II, TGFB2</p> <p>Background: Transmembrane serine/threonine kinase forming with the TGF-beta type I serine/threonine kinase receptor, TGFB1, the non-promiscuous receptor for the TGF-beta cytokines TGFB1, TGFB2 and TGFB3. Transduces the TGFB1, TGFB2 and TGFB3 signal from the cell surface to the cytoplasm and is thus regulating a plethora of physiological and pathological processes including cell cycle arrest in epithelial and hematopoietic cells, control of mesenchymal cell proliferation and differentiation, wound healing, extracellular matrix production, immunosuppression and carcinogenesis. The formation of the receptor complex composed of 2 TGFB1 and 2 TGFB2 Molecules symmetrically bound to the cytokine dimer results in the phosphorylation and the activation of TGFB1 by the constitutively active TGFB2. Activated TGFB1 phosphorylates SMAD2 which dissociates from the receptor and interacts with SMAD4. The SMAD2-SMAD4 complex is subsequently translocated to the nucleus where it modulates the transcription of the TGF-beta-regulated genes. This constitutes the canonical SMAD-dependent TGF-beta signaling cascade. Also involved in non-canonical, SMAD-independent TGF-beta signaling pathways.</p>
Gene ID:	7048
UniProt:	P37173

Application Details

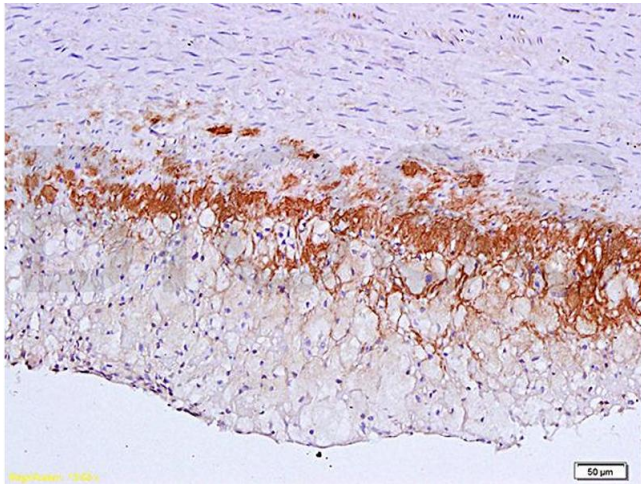
Application Notes:	WB 1:300-5000 ELISA 1:500-1000 FCM 1:20-100 IHC-P 1:200-400 IHC-F 1:100-500 IF(IHC-P) 1:50-200 IF(IHC-F) 1:50-200 IF(ICC) 1:50-200
Restrictions:	For Research Use only

Handling

Format:	Liquid
Concentration:	1 µg/µL
Buffer:	0.01M TBS(pH 7.4) with 1 % BSA, 0.02 % Proclin300 and 50 % Glycerol.
Preservative:	ProClin
Precaution of Use:	This product contains ProClin: a POISONOUS AND HAZARDOUS SUBSTANCE, which should be handled by trained staff only.
Storage:	4 °C,-20 °C
Storage Comment:	Shipped at 4°C. Store at -20°C for one year. Avoid repeated freeze/thaw cycles.
Expiry Date:	12 months

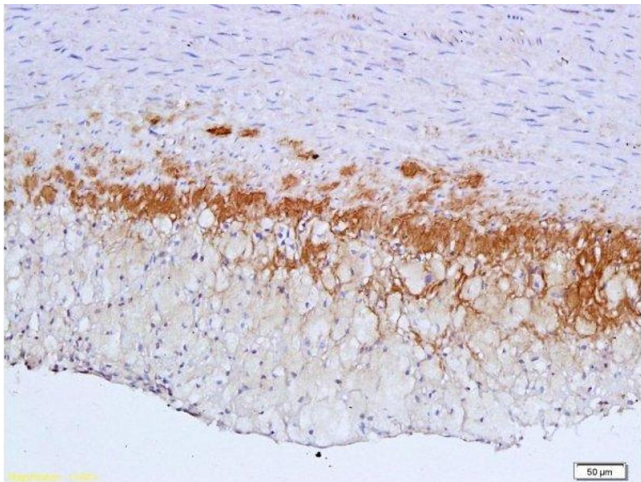
Publications

Product cited in:	<p>Friedrichs, Fink, Mauch, Kindler, Hartmann, Schüle, Buettner, Friedrichs: "TGF-β1-dependent induction and nuclear translocation of FHL2 promotes keratin expression in pilomatricoma." in: Virchows Archiv : an international journal of pathology, Vol. 466, Issue 2, pp. 199-208, (2015) (PubMed).</p> <p>Hirayama, Koyama, Sawai, Fujii, Naito, Fukuda, Kageyama: "Localization of TGF-β and TGF-β receptor in bovine term placentome and expression differences between spontaneous and induced parturition." in: Placenta, Vol. 36, Issue 11, pp. 1239-45, (2015) (PubMed).</p> <p>Abdelmagid, Belcher, Moussa, Lababidi, Sondag, Novak, Sanyurah, Frara, Razmpour, Del Carpio-Cano, Safadi: "Mutation in osteoactivin decreases bone formation in vivo and osteoblast differentiation in vitro." in: The American journal of pathology, Vol. 184, Issue 3, pp. 697-713, (2014) (PubMed).</p> <p>Li, Li, Pan, Jin: "TNF-α enhances the effect of TGF-β on Gli2 expression in the KG-1 leukemic cell line." in: Experimental and therapeutic medicine, Vol. 8, Issue 2, pp. 676-680, (2014) (PubMed).</p>
-------------------	--



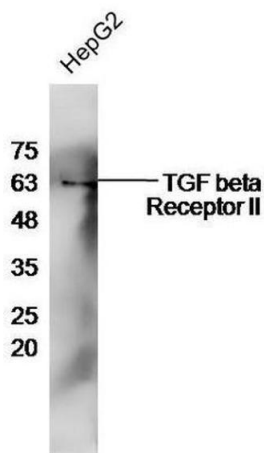
Immunohistochemistry

Image 1. Formalin-fixed and paraffin embedded: rabbit carotid artery labeled with Anti-TGF-beta-R2/TGFBR2 Polyclonal Antibody (ABIN725225), Unconjugated 1:600 followed by conjugation to the secondary antibody and DAB staining



Immunohistochemistry (Paraffin-embedded Sections)

Image 2. Formalin-fixed and paraffin embedded: rabbit carotid artery labeled with Anti-TGF-beta-R2/TGFBR2 Polyclonal Antibody , Unconjugated 1:600 followed by conjugation to the secondary antibody and DAB staining



Western Blotting

Image 3. HepG2 cell lysates probed with Rabbit Anti-TGF beta R2 Polyclonal Antibody, Unconjugated at 1:500 for 90 min at 37°C.