

Datasheet for ABIN7252381

**anti-SHPK antibody****2** Images[Go to Product page](#)

## Overview

Quantity:	200 µL
Target:	SHPK
Reactivity:	Human, Mouse
Host:	Rabbit
Clonality:	Polyclonal
Conjugate:	This SHPK antibody is un-conjugated
Application:	Western Blotting (WB), Immunohistochemistry (IHC), ELISA

## Product Details

Immunogen:	Fusion protein of human SHPK
Isotype:	IgG
Characteristics:	Polyclonal Antibody
Purification:	Antigen affinity purification

## Target Details

Target:	SHPK
Alternative Name:	SHPK ( <a href="#">SHPK Products</a> )
Background:	The protein encoded by this gene has weak homology to several carbohydrate kinases, a class of proteins involved in the phosphorylation of sugars as they enter a cell, inhibiting return across the cell membrane. Sequence variation between this novel gene and known carbohydrate kinases suggests the possibility of a different substrate, cofactor or changes in

## Target Details

kinetic properties distinguishing it from other carbohydrate kinases. The gene resides in a region commonly deleted in cystinosis patients, suggesting a role as a modifier for the cystinosis phenotype. The genomic region is also rich in Alu repetitive sequences, frequently involved in chromosomal rearrangements.

Molecular Weight: Observed\_MW: Refer to figures  
Calculated\_MW: 51 kDa

UniProt: [Q9UHH6](#)

Pathways: [Cellular Response to Molecule of Bacterial Origin](#)

## Application Details

Application Notes: WB 1:500-1:2000, IHC 1:40-1:200, ELISA 1:5000-1:10000

Restrictions: For Research Use only

## Handling

Format: Liquid

Concentration: 1.1 mg/mL

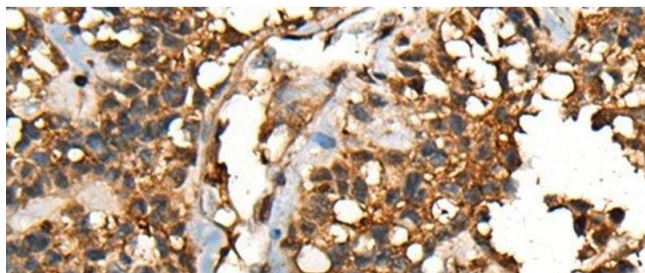
Buffer: PBS with 0.05 % Sodium azide and 40 % Glycerol, pH 7.4

Preservative: Sodium azide

Precaution of Use: This product contains Sodium azide: a POISONOUS AND HAZARDOUS SUBSTANCE which should be handled by trained staff only.

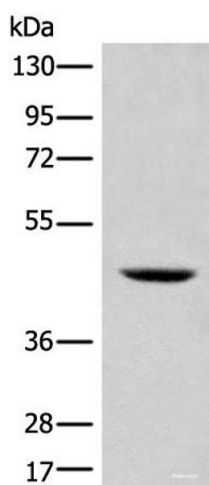
Storage: -20 °C

Storage Comment: Store at -20°C. Avoid freeze / thaw cycles.



#### Immunohistochemistry (Paraffin-embedded Sections)

**Image 1.** Immunohistochemistry of paraffin-embedded Human ovarian cancer tissue using SHPK Polyclonal Antibody at dilution of 1:45(x200)



#### Western Blotting

**Image 2.** Western blot analysis of 293T cell lysate using SHPK Polyclonal Antibody at dilution of 1:500