

Datasheet for ABIN7252387

anti-MICU1 antibody**2** Images[Go to Product page](#)

Overview

Quantity:	200 µL
Target:	MICU1
Reactivity:	Human, Mouse, Rat
Host:	Rabbit
Clonality:	Polyclonal
Conjugate:	This MICU1 antibody is un-conjugated
Application:	ELISA, Immunohistochemistry (IHC)

Product Details

Immunogen:	Fusion protein of human MICU1
Isotype:	IgG
Characteristics:	Polyclonal Antibody
Purification:	Antigen affinity purification

Target Details

Target:	MICU1
Alternative Name:	MICU1 (MICU1 Products)
Background:	<p>This gene encodes an essential regulator of mitochondrial Ca²⁺ uptake under basal conditions. The encoded protein interacts with the mitochondrial calcium uniporter, a mitochondrial inner membrane Ca²⁺ channel, and is essential in preventing mitochondrial Ca²⁺ overload, which can cause excessive production of reactive oxygen species and cell stress. Alternatively spliced</p>

Target Details

transcript variants encoding different isoforms have been described. MICU1 (Mitochondrial Calcium Uptake 1) is a Protein Coding gene. Diseases associated with MICU1 include Myopathy With Extrapyrarnidal Signs and Fish Allergy. Among its related pathways are Ca, cAMP and Lipid Signaling. GO annotations related to this gene include calcium ion binding and protein heterodimerization activity. An important paralog of this gene is MICU3.

UniProt: [Q9BPX6](#)

Application Details

Application Notes: IHC 1:30-1:150, ELISA 1:5000-1:10000

Restrictions: For Research Use only

Handling

Format: Liquid

Concentration: 0.6 mg/mL

Buffer: PBS with 0.05 % Sodium azide and 40 % Glycerol, pH 7.4

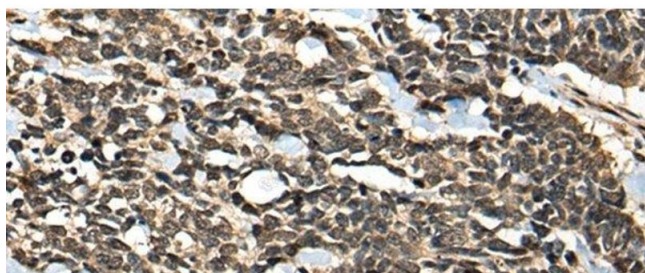
Preservative: Sodium azide

Precaution of Use: This product contains Sodium azide: a POISONOUS AND HAZARDOUS SUBSTANCE which should be handled by trained staff only.

Storage: -20 °C

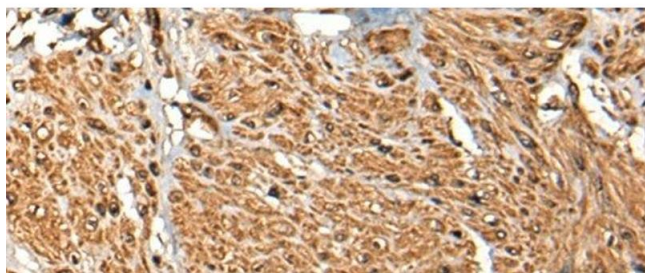
Storage Comment: Store at -20°C. Avoid freeze / thaw cycles.

Images



Immunohistochemistry (Paraffin-embedded Sections)

Image 1. Immunohistochemistry of paraffin-embedded Human lung cancer tissue using MICU1 Polyclonal Antibody at dilution of 1:35(x200)



Immunohistochemistry (Paraffin-embedded Sections)

Image 2. Immunohistochemistry of paraffin-embedded Human prostate cancer tissue using MICU1 Polyclonal Antibody at dilution of 1:35(x200)