

Datasheet for ABIN7252414

**anti-CECR1 antibody**[Go to Product page](#)**1** Image

## Overview

Quantity:	200 µL
Target:	CECR1
Reactivity:	Human
Host:	Rabbit
Clonality:	Polyclonal
Conjugate:	This CECR1 antibody is un-conjugated
Application:	Immunohistochemistry (IHC), ELISA

## Product Details

Immunogen:	Fusion protein of human CECR1
Isotype:	IgG
Characteristics:	Polyclonal Antibody
Purification:	Antigen affinity purification

## Target Details

Target:	CECR1
Alternative Name:	CECR1 ( <a href="#">CECR1 Products</a> )
Background:	This gene encodes a member of a subfamily of the adenosine deaminase protein family. The encoded protein is one of two adenosine deaminases found in humans, which regulate levels of the signaling molecule, adenosine. The encoded protein is secreted from monocytes undergoing differentiation and may regulate cell proliferation and differentiation. This gene may

## Target Details

be responsible for some of the phenotypic features associated with cat eye syndrome.  
Alternative splicing results in multiple transcript variants.

UniProt: [Q9NZK5](#)

Pathways: [Ribonucleoside Biosynthetic Process](#)

## Application Details

Application Notes: IHC 1:30-1:150, ELISA 1:5000-1:10000

Restrictions: For Research Use only

## Handling

Format: Liquid

Concentration: 0.7 mg/mL

Buffer: PBS with 0.05 % Sodium azide and 40 % Glycerol, pH 7.4

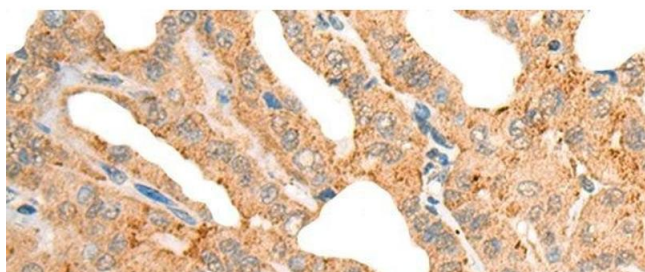
Preservative: Sodium azide

Precaution of Use: This product contains Sodium azide: a POISONOUS AND HAZARDOUS SUBSTANCE which should be handled by trained staff only.

Storage: -20 °C

Storage Comment: Store at -20°C. Avoid freeze / thaw cycles.

## Images



### Immunohistochemistry (Paraffin-embedded Sections)

**Image 1.** Immunohistochemistry of paraffin-embedded Human thyroid cancer tissue using CECR1 Polyclonal Antibody at dilution of 1:40(x200)