



[Go to Product page](#)

Datasheet for ABIN7252420

anti-CEP57 antibody

3 Images

Overview

| | |
|--------------|--|
| Quantity: | 200 µL |
| Target: | CEP57 |
| Reactivity: | Human, Mouse, Rat |
| Host: | Rabbit |
| Clonality: | Polyclonal |
| Conjugate: | This CEP57 antibody is un-conjugated |
| Application: | Western Blotting (WB), ELISA, Immunohistochemistry (IHC) |

Product Details

| | |
|------------------|-------------------------------|
| Immunogen: | Full length fusion protein |
| Isotype: | IgG |
| Characteristics: | Polyclonal Antibody |
| Purification: | Antigen affinity purification |

Target Details

| | |
|-------------------|---|
| Target: | CEP57 |
| Alternative Name: | CEP57 (CEP57 Products) |
| Background: | This gene encodes a cytoplasmic protein called Translokin. This protein localizes to the centrosome and has a function in microtubular stabilization. The N-terminal half of this protein is required for its centrosome localization and for its multimerization, and the C-terminal half is required for nucleating, bundling and anchoring microtubules to the centrosomes. This protein |

Target Details

specifically interacts with fibroblast growth factor 2 (FGF2), sorting nexin 6, Ran-binding protein M and the kinesins KIF3A and KIF3B, and thus mediates the nuclear translocation and mitogenic activity of the FGF2. It also interacts with cyclin D1 and controls nucleocytoplasmic distribution of the cyclin D1 in quiescent cells. This protein is crucial for maintaining correct chromosomal number during cell division. Mutations in this gene cause mosaic variegated aneuploidy syndrome, a rare autosomal recessive disorder. Multiple alternatively spliced transcript variants encoding different isoforms have been identified.

Molecular Weight: Observed_MW: Refer to figures
Calculated_MW: 57 kDa

UniProt: [Q86XR8](#)

Pathways: [M Phase](#), [Maintenance of Protein Location](#), [Protein targeting to Nucleus](#), [Growth Factor Binding](#)

Application Details

Application Notes: WB 1:500-1:2000, IHC 1:25-1:100, ELISA 1:5000-1:10000

Restrictions: For Research Use only

Handling

Format: Liquid

Concentration: 0.4 mg/mL

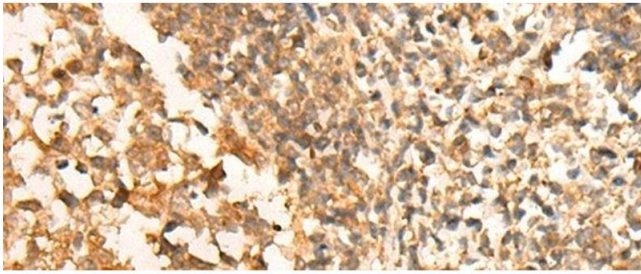
Buffer: PBS with 0.05 % Sodium azide and 40 % Glycerol, pH 7.4

Preservative: Sodium azide

Precaution of Use: This product contains Sodium azide: a POISONOUS AND HAZARDOUS SUBSTANCE which should be handled by trained staff only.

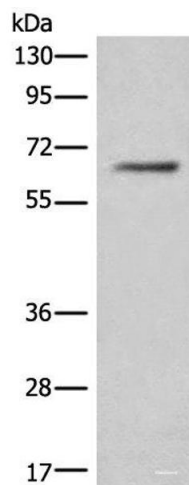
Storage: -20 °C

Storage Comment: Store at -20°C. Avoid freeze / thaw cycles.



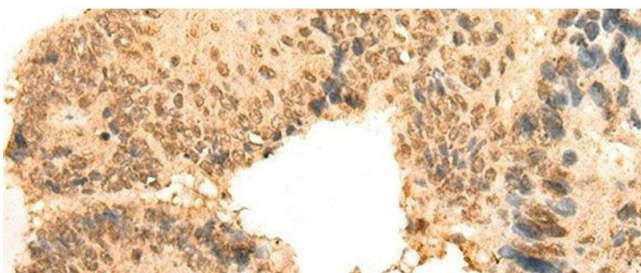
Immunohistochemistry (Paraffin-embedded Sections)

Image 1. Immunohistochemistry of paraffin-embedded Human tonsil tissue using CEP57 Polyclonal Antibody at dilution of 1:30(x200)



Western Blotting

Image 2. Western blot analysis of Hela cell lysate using CEP57 Polyclonal Antibody at dilution of 1:450



Immunohistochemistry (Paraffin-embedded Sections)

Image 3. Immunohistochemistry of paraffin-embedded Human colorectal cancer tissue using CEP57 Polyclonal Antibody at dilution of 1:30(x200)