

Datasheet for ABIN7252423

**anti-CFHR2 antibody****3** Images[Go to Product page](#)

## Overview

Quantity:	200 µL
Target:	CFHR2
Reactivity:	Human
Host:	Rabbit
Clonality:	Polyclonal
Conjugate:	This CFHR2 antibody is un-conjugated
Application:	Western Blotting (WB), ELISA, Immunohistochemistry (IHC)

## Product Details

Immunogen:	Fusion protein of human CFHR2
Isotype:	IgG
Characteristics:	Polyclonal Antibody
Purification:	Antigen affinity purification

## Target Details

Target:	CFHR2
Alternative Name:	CFHR2 ( <a href="#">CFHR2 Products</a> )
Background:	This gene belongs to a family of complement factor H-related genes (CFHR), which are clustered together with complement factor H gene on chromosome 1, and are involved in regulation of complement. Mutations in CFHR genes have been associated with dense deposit disease and atypical haemolytic-uraemic syndrome. Alternatively spliced transcript variants

## Target Details

have been found for this gene.

Molecular Weight: Observed\_MW: Refer to figures  
Calculated\_MW: 31 kDa

UniProt: [P36980](#)

## Application Details

Application Notes: WB 1:500-1:2000, IHC 1:30-1:150, ELISA 1:5000-1:10000

Restrictions: For Research Use only

## Handling

Format: Liquid

Concentration: 0.6 mg/mL

Buffer: PBS with 0.05 % Sodium azide and 40 % Glycerol, pH 7.4

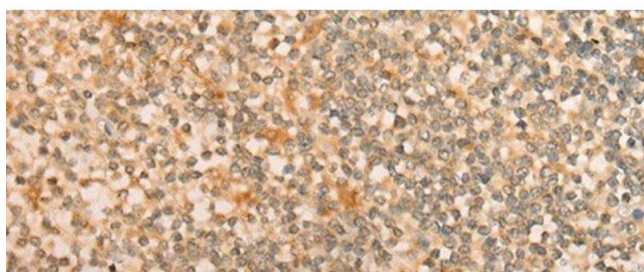
Preservative: Sodium azide

Precaution of Use: This product contains Sodium azide: a POISONOUS AND HAZARDOUS SUBSTANCE which should be handled by trained staff only.

Storage: -20 °C

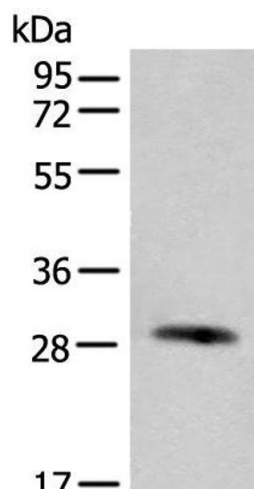
Storage Comment: Store at -20°C. Avoid freeze / thaw cycles.

## Images



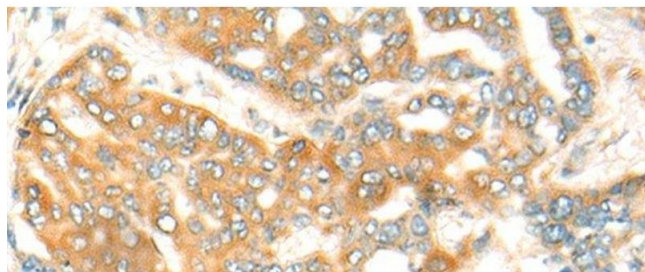
### Immunohistochemistry (Paraffin-embedded Sections)

**Image 1.** Immunohistochemistry of paraffin-embedded Human tonsil tissue using CFHR2 Polyclonal Antibody at dilution of 1:35(x200)



#### Western Blotting

**Image 2.** Western blot analysis of Human urinary bladder tissue lysate using CFHR2 Polyclonal Antibody at dilution of 1:550



#### Immunohistochemistry (Paraffin-embedded Sections)

**Image 3.** Immunohistochemistry of paraffin-embedded Human liver cancer tissue using CFHR2 Polyclonal Antibody at dilution of 1:35(x200)