



Datasheet for ABIN7252438

## anti-Cytidine Monophosphate (UMP-CMP) Kinase 1, Cytosolic (CMPK1) antibody



[Go to Product page](#)

### 1 Image

#### Overview

Quantity:	200 µL
Target:	Cytidine Monophosphate (UMP-CMP) Kinase 1, Cytosolic (CMPK1)
Reactivity:	Human, Mouse, Rat
Host:	Rabbit
Clonality:	Polyclonal
Conjugate:	Un-conjugated
Application:	Western Blotting (WB), ELISA

#### Product Details

Immunogen:	Full length fusion protein
Isotype:	IgG
Characteristics:	Polyclonal Antibody
Purification:	Antigen affinity purification

#### Target Details

Target:	Cytidine Monophosphate (UMP-CMP) Kinase 1, Cytosolic (CMPK1)
Alternative Name:	CMPK1 ( <a href="#">CMPK1 Products</a> )
Background:	This gene encodes one of the enzymes required for cellular nucleic acid biosynthesis. This enzyme catalyzes the transfer of a phosphate group from ATP to CMP, UMP, or dCMP, to form the corresponding diphosphate nucleotide. Alternate splicing results in both coding and non-coding transcript variants.

## Target Details

Molecular Weight:	Observed_MW: Refer to figures Calculated_MW: 22 kDa
UniProt:	<a href="#">P30085</a>
Pathways:	<a href="#">Nucleotide Phosphorylation</a> , <a href="#">Ribonucleoside Biosynthetic Process</a>

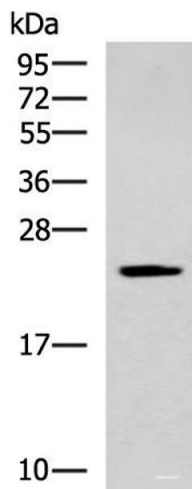
## Application Details

Application Notes:	WB 1:500-1:2000, ELISA 1:500-1000
Restrictions:	For Research Use only

## Handling

Format:	Liquid
Concentration:	0.66 mg/mL
Buffer:	PBS with 0.05 % Sodium azide and 40 % Glycerol, pH 7.4
Preservative:	Sodium azide
Precaution of Use:	This product contains Sodium azide: a POISONOUS AND HAZARDOUS SUBSTANCE which should be handled by trained staff only.
Storage:	-20 °C
Storage Comment:	Store at -20°C. Avoid freeze / thaw cycles.

## Images



### Western Blotting

**Image 1.** Western blot analysis of Human fetal liver tissue lysate using CMPK1 Polyclonal Antibody at dilution of 1:700