

## Datasheet for ABIN7252450 **anti-CYP4X1 antibody**

### 2 Images



[Go to Product page](#)

### Overview

|              |                                       |
|--------------|---------------------------------------|
| Quantity:    | 200 µL                                |
| Target:      | CYP4X1                                |
| Reactivity:  | Human                                 |
| Host:        | Rabbit                                |
| Clonality:   | Polyclonal                            |
| Conjugate:   | This CYP4X1 antibody is un-conjugated |
| Application: | ELISA, Immunohistochemistry (IHC)     |

### Product Details

|                  |                                |
|------------------|--------------------------------|
| Immunogen:       | Fusion protein of human CYP4X1 |
| Isotype:         | IgG                            |
| Characteristics: | Polyclonal Antibody            |
| Purification:    | Antigen affinity purification  |

### Target Details

|                   |                                                                                                                                                                                                                                                                                                                                                                 |
|-------------------|-----------------------------------------------------------------------------------------------------------------------------------------------------------------------------------------------------------------------------------------------------------------------------------------------------------------------------------------------------------------|
| Target:           | CYP4X1                                                                                                                                                                                                                                                                                                                                                          |
| Alternative Name: | CYP4X1 ( <a href="#">CYP4X1 Products</a> )                                                                                                                                                                                                                                                                                                                      |
| Background:       | This gene encodes a member of the cytochrome P450 superfamily of enzymes and is located within a cluster of genes belonging to this superfamily on chromosome 1. The cytochrome P450 proteins are monooxygenases which catalyze many reactions involved in drug metabolism and synthesis of cholesterol, steroids and other lipids. The expression pattern of a |

## Target Details

similar rat protein suggests that this protein may be involved in neurovascular function in the brain. Alternative splicing results in multiple transcript variants.

UniProt: [Q8N118](#)

Pathways: [Regulation of Lipid Metabolism by PPARalpha](#)

## Application Details

Application Notes: IHC 1:40-1:200, ELISA 1:5000-1:10000

Restrictions: For Research Use only

## Handling

Format: Liquid

Concentration: 1.32 mg/mL

Buffer: PBS with 0.05 % Sodium azide and 40 % Glycerol, pH 7.4

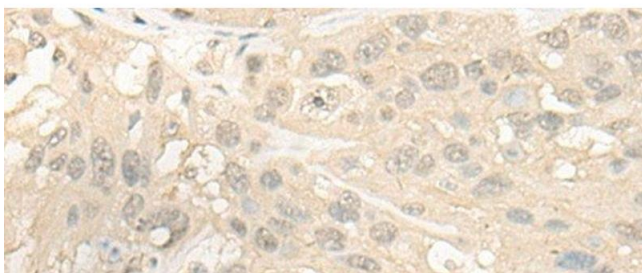
Preservative: Sodium azide

Precaution of Use: This product contains Sodium azide: a POISONOUS AND HAZARDOUS SUBSTANCE which should be handled by trained staff only.

Storage: -20 °C

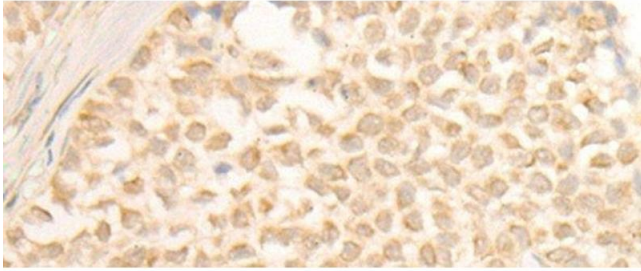
Storage Comment: Store at -20°C. Avoid freeze / thaw cycles.

## Images



### Immunohistochemistry (Paraffin-embedded Sections)

**Image 1.** Immunohistochemistry of paraffin-embedded Human esophagus cancer tissue using CYP4X1 Polyclonal Antibody at dilution of 1:40(x200)



### Immunohistochemistry (Paraffin-embedded Sections)

**Image 2.** Immunohistochemistry of paraffin-embedded Human ovarian cancer tissue using CYP4X1 Polyclonal Antibody at dilution of 1:40(x200)