

Datasheet for ABIN7252477  
**anti-HLA-DMB antibody**

## 2 Images

[Go to Product page](#)

## Overview

Quantity:	200 µL
Target:	HLA-DMB
Reactivity:	Human
Host:	Rabbit
Clonality:	Polyclonal
Conjugate:	This HLA-DMB antibody is un-conjugated
Application:	Western Blotting (WB), ELISA, Immunohistochemistry (IHC)

## Product Details

Immunogen:	Fusion protein of human HLA-DMB
Isotype:	IgG
Characteristics:	Polyclonal Antibody
Purification:	Antigen affinity purification

## Target Details

Target:	HLA-DMB
Alternative Name:	HLA-DMB ( <a href="#">HLA-DMB Products</a> )
Background:	<p>HLA-DMB (Major Histocompatibility Complex, Class II, DM Beta) is a Protein Coding gene.</p> <p>Diseases associated with HLA-DMB include Red-Green Color Blindness and Red Color Blindness. Among its related pathways are ICos-ICosL Pathway in T-Helper Cell and CTLA4 Signaling. GO annotations related to this gene include MHC class II protein complex binding. An</p>

## Target Details

important paralog of this gene is ENSG00000248993. HLA-DMB belongs to the HLA class II beta chain paralogues. This class II molecule is a heterodimer consisting of an alpha (DMA) and a beta (DMB) chain, both anchored in the membrane. It is located in intracellular vesicles. DM plays a central role in the peptide loading of MHC class II molecules by helping to release the CLIP (class II-associated invariant chain peptide) molecule from the peptide binding site. Class II molecules are expressed in antigen presenting cells (APC: B lymphocytes, dendritic cells, macrophages). The beta chain is approximately 26-28 kDa and its gene contains 6 exons. Exon one encodes the leader peptide, exons 2 and 3 encode the two extracellular domains, exon 4 encodes the transmembrane domain and exon 5 encodes the cytoplasmic tail.

Molecular Weight: Observed\_MW: Refer to figures  
Calculated\_MW: 29 kDa

UniProt: [P28068](#)

Pathways: [Cancer Immune Checkpoints](#), [Human Leukocyte Antigen \(HLA\) in Adaptive Immune Response](#)

## Application Details

Application Notes: WB 1:500-1:2000, IHC 1:30-1:150, ELISA 1:5000-1:10000

Restrictions: For Research Use only

## Handling

Format: Liquid

Concentration: 1.38 mg/mL

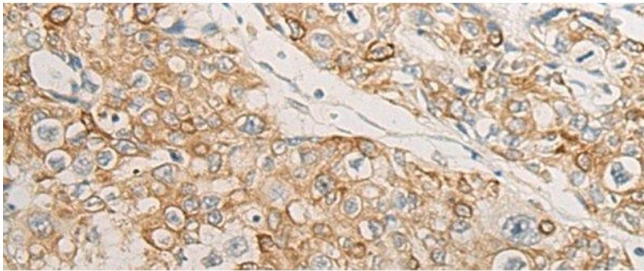
Buffer: PBS with 0.05 % Sodium azide and 40 % Glycerol, pH 7.4

Preservative: Sodium azide

Precaution of Use: This product contains Sodium azide: a POISONOUS AND HAZARDOUS SUBSTANCE which should be handled by trained staff only.

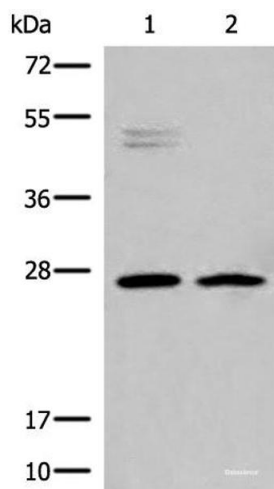
Storage: -20 °C

Storage Comment: Store at -20°C. Avoid freeze / thaw cycles.



Immunohistochemistry (Paraffin-embedded Sections)

**Image 1.** Immunohistochemistry of paraffin-embedded Human prostate cancer tissue using HLA-DMB Polyclonal Antibody at dilution of 1:40(x200)



Western Blotting

**Image 2.** Western blot analysis of K562 and Jurkat cell lysates using HLA-DMB Polyclonal Antibody at dilution of 1:550