



Datasheet for ABIN7252480 anti-MYOZ2 antibody



[Go to Product page](#)

1 Image

Overview

Quantity:	200 µL
Target:	MYOZ2
Reactivity:	Human, Mouse
Host:	Rabbit
Clonality:	Polyclonal
Conjugate:	This MYOZ2 antibody is un-conjugated
Application:	Western Blotting (WB), ELISA

Product Details

Immunogen:	Full length fusion protein
Isotype:	IgG
Characteristics:	Polyclonal Antibody
Purification:	Antigen affinity purification

Target Details

Target:	MYOZ2
Alternative Name:	MYOZ2 (MYOZ2 Products)
Background:	MYOZ2 (Myozenin 2) is a Protein Coding gene. Diseases associated with MYOZ2 include Cardiomyopathy, Hypertrophic, 16 and Myoz2-Related Familial Hypertrophic Cardiomyopathy. GO annotations related to this gene include actin binding and telethonin binding. An important paralog of this gene is MYOZ1. The protein encoded by this gene belongs to a family of

Target Details

sarcomeric proteins that bind to calcineurin, a phosphatase involved in calcium-dependent signal transduction in diverse cell types. These family members tether calcineurin to alpha-actinin at the z-line of the sarcomere of cardiac and skeletal muscle cells, and thus they are important for calcineurin signaling. Mutations in this gene cause cardiomyopathy familial hypertrophic type 16, a hereditary heart disorder.

Molecular Weight: Observed_MW: Refer to figures
Calculated_MW: 30 kDa

UniProt: [Q9NPC6](#)

Application Details

Application Notes: WB 1:500-1:2000, ELISA 1:5000-1:10000

Restrictions: For Research Use only

Handling

Format: Liquid

Concentration: 1.08 mg/mL

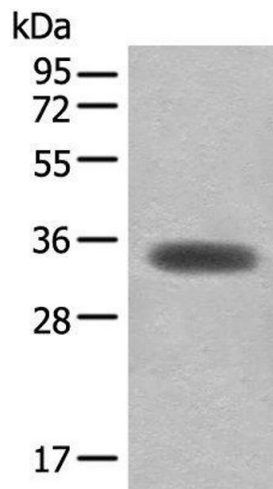
Buffer: PBS with 0.05 % Sodium azide and 40 % Glycerol, pH 7.4

Preservative: Sodium azide

Precaution of Use: This product contains Sodium azide: a POISONOUS AND HAZARDOUS SUBSTANCE which should be handled by trained staff only.

Storage: -20 °C

Storage Comment: Store at -20°C. Avoid freeze / thaw cycles.



Western Blotting

Image 1. Western blot analysis of Mouse skeletal muscle tissue lysate using MYOZ2 Polyclonal Antibody at dilution of 1:450