

Datasheet for ABIN7252513

**anti-DNASEX antibody**[Go to Product page](#)**1** Image

## Overview

Quantity:	200 µL
Target:	DNASEX
Reactivity:	Human
Host:	Rabbit
Clonality:	Polyclonal
Conjugate:	This DNASEX antibody is un-conjugated
Application:	ELISA, Immunohistochemistry (IHC)

## Product Details

Immunogen:	Fusion protein of human DNASE1L1
Isotype:	IgG
Characteristics:	Polyclonal Antibody
Purification:	Antigen affinity purification

## Target Details

Target:	DNASEX
Alternative Name:	DNASE1L1 ( <a href="#">DNASEX Products</a> )
Background:	This gene encodes a deoxyribonuclease protein that shows high sequence similarity to DNase I. The encoded protein is localized to the endoplasmic reticulum and modified by N-linked glycosylation. Alternate transcriptional splice variants encoding the same protein have been observed.

## Target Details

UniProt: [P49184](#)

## Application Details

Application Notes: IHC 1:30-1:150, ELISA 1:5000-1:10000

Restrictions: For Research Use only

## Handling

Format: Liquid

Concentration: 0.9 mg/mL

Buffer: PBS with 0.05 % Sodium azide and 40 % Glycerol, pH 7.4

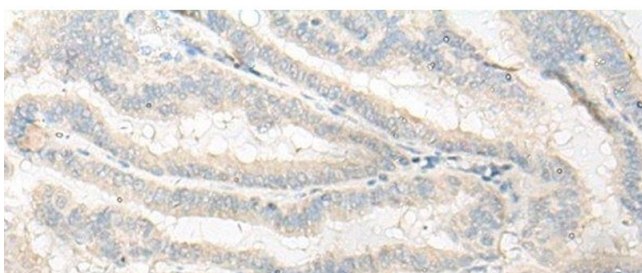
Preservative: Sodium azide

Precaution of Use: This product contains Sodium azide: a POISONOUS AND HAZARDOUS SUBSTANCE which should be handled by trained staff only.

Storage: -20 °C

Storage Comment: Store at -20°C. Avoid freeze / thaw cycles.

## Images



### Immunohistochemistry (Paraffin-embedded Sections)

**Image 1.** Immunohistochemistry of paraffin-embedded Human thyroid cancer tissue using DNASE1L1 Polyclonal Antibody at dilution of 1:25(x200)