



[Go to Product page](#)

Datasheet for ABIN7252519

## anti-C7orf42 antibody

### 2 Images

#### Overview

Quantity:	200 µL
Target:	C7orf42
Reactivity:	Human, Mouse, Rat
Host:	Rabbit
Clonality:	Polyclonal
Conjugate:	This C7orf42 antibody is un-conjugated
Application:	Western Blotting (WB), ELISA, Immunohistochemistry (IHC)

#### Product Details

Immunogen:	Fusion protein of human TMEM248
Isotype:	IgG
Characteristics:	Polyclonal Antibody
Purification:	Antigen affinity purification

#### Target Details

Target:	C7orf42
Alternative Name:	TMEM248 ( <a href="#">C7orf42 Products</a> )
Background:	The function of this protein remains unknown.
Molecular Weight:	Observed_MW: Refer to figures Calculated_MW: 35 kDa

## Target Details

---

UniProt: [Q9NWD8](#)

## Application Details

---

Application Notes: WB 1:500-1:2000, IHC 1:25-1:100, ELISA 1:5000-1:10000

Restrictions: For Research Use only

## Handling

---

Format: Liquid

Concentration: 0.78 mg/mL

Buffer: PBS with 0.05 % Sodium azide and 40 % Glycerol, pH 7.4

Preservative: Sodium azide

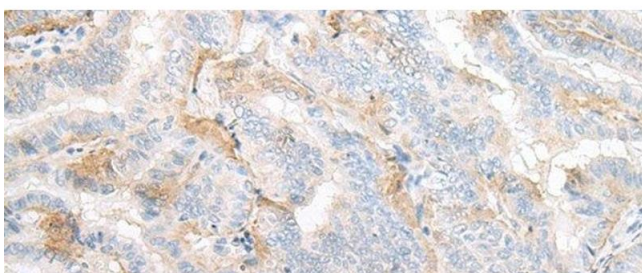
Precaution of Use: This product contains Sodium azide: a POISONOUS AND HAZARDOUS SUBSTANCE which should be handled by trained staff only.

Storage: -20 °C

Storage Comment: Store at -20°C. Avoid freeze / thaw cycles.

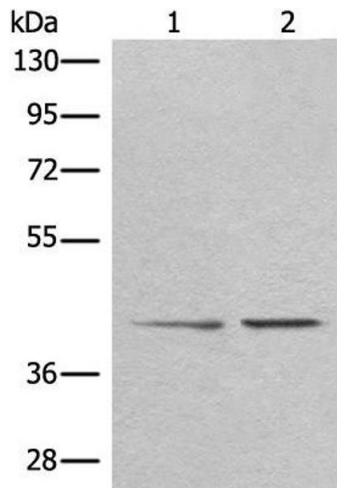
## Images

---



### Immunohistochemistry (Paraffin-embedded Sections)

**Image 1.** Immunohistochemistry of paraffin-embedded Human thyroid cancer tissue using TMEM248 Polyclonal Antibody at dilution of 1:25(x200)



### Western Blotting

**Image 2.** Western blot analysis of A172 and HEPG2 cell lysates using TMEM248 Polyclonal Antibody at dilution of 1:300