



[Go to Product page](#)

Datasheet for ABIN7252558

## anti-TUFT1 antibody

### 2 Images

#### Overview

|              |                                      |
|--------------|--------------------------------------|
| Quantity:    | 200 µL                               |
| Target:      | TUFT1                                |
| Reactivity:  | Mouse, Human                         |
| Host:        | Rabbit                               |
| Clonality:   | Polyclonal                           |
| Conjugate:   | This TUFT1 antibody is un-conjugated |
| Application: | ELISA, Immunohistochemistry (IHC)    |

#### Product Details

|                  |                               |
|------------------|-------------------------------|
| Immunogen:       | Fusion protein of human TUFT1 |
| Isotype:         | IgG                           |
| Characteristics: | Polyclonal Antibody           |
| Purification:    | Antigen affinity purification |

#### Target Details

|                   |  |
|-------------------|--|
| Target:           | TUFT1  |
| Alternative Name: | TUFT1 ( <a href="#">TUFT1 Products</a> )   |
| Background:       | Tuftelin is an acidic protein that is thought to play a role in dental enamel mineralization and is implicated in caries susceptibility. It is also thought to be involved with adaptation to hypoxia, mesenchymal stem cell function, and neurotrophin nerve growth factor mediated neuronal differentiation. |

## Target Details

---

UniProt: [Q9NNX1](#)

## Application Details

---

Application Notes: IHC 1:100-1:300, ELISA 1:5000-1:10000

Restrictions: For Research Use only

## Handling

---

Format: Liquid

Concentration: 2.22 mg/mL

Buffer: PBS with 0.05 % Sodium azide and 40 % Glycerol, pH 7.4

Preservative: Sodium azide

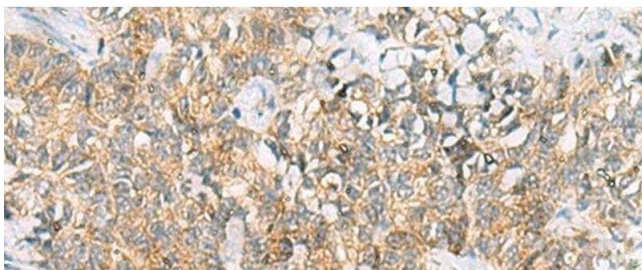
Precaution of Use: This product contains Sodium azide: a POISONOUS AND HAZARDOUS SUBSTANCE which should be handled by trained staff only.

Storage: -20 °C

Storage Comment: Store at -20°C. Avoid freeze / thaw cycles.

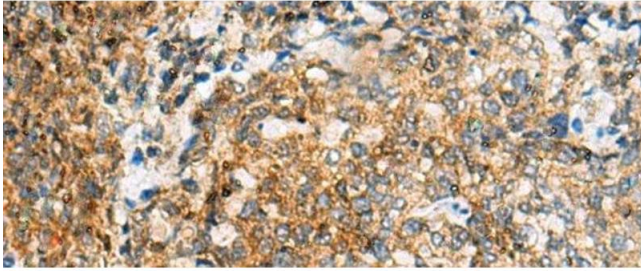
## Images

---



### Immunohistochemistry (Paraffin-embedded Sections)

**Image 1.** Immunohistochemistry of paraffin-embedded Human ovarian cancer tissue using TUFT1 Polyclonal Antibody at dilution of 1:120(x200)



### Immunohistochemistry (Paraffin-embedded Sections)

**Image 2.** Immunohistochemistry of paraffin-embedded Human cervical cancer tissue using TUFT1 Polyclonal Antibody at dilution of 1:120(x200)