

Datasheet for ABIN7252561

anti-ILKAP antibody**2** Images[Go to Product page](#)

Overview

Quantity:	200 µL
Target:	ILKAP
Reactivity:	Human, Mouse, Rat
Host:	Rabbit
Clonality:	Polyclonal
Conjugate:	This ILKAP antibody is un-conjugated
Application:	Western Blotting (WB), ELISA, Immunohistochemistry (IHC)

Product Details

Immunogen:	Fusion protein of human ILKAP
Isotype:	IgG
Characteristics:	Polyclonal Antibody
Purification:	Antigen affinity purification

Target Details

Target:	ILKAP
Alternative Name:	ILKAP (ILKAP Products)
Background:	<p>The protein encoded by this gene is a protein serine/threonine phosphatase of the PP2C family. This protein can interact with integrin-linked kinase (ILK/ILK1), a regulator of integrin mediated signaling, and regulate the kinase activity of ILK. Through the interaction with ILK, this protein may selectively affect the signaling process of ILK-mediated glycogen synthase kinase 3 beta</p>

Target Details

(GSK3beta), and thus participate in Wnt signaling pathway. ILKAP (ILK Associated Serine/Threonine Phosphatase) is a Protein Coding gene. Among its related pathways are AKT Signaling Pathway. GO annotations related to this gene include protein serine/threonine phosphatase activity. An important paralog of this gene is PPM1F.

Molecular Weight: Observed_MW: Refer to figures
Calculated_MW: 43 kDa

UniProt: [Q9H0C8](#)

Application Details

Application Notes: WB 1:500-1:2000, IHC 1:50-1:300, ELISA 1:5000-1:10000

Restrictions: For Research Use only

Handling

Format: Liquid

Concentration: 0.96 mg/mL

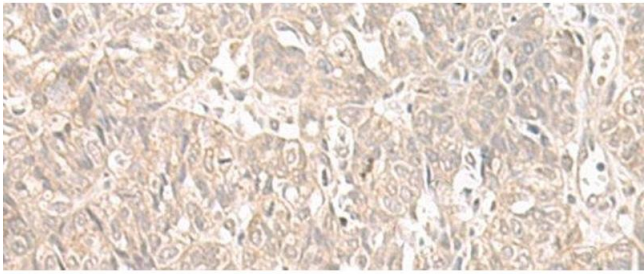
Buffer: PBS with 0.05 % Sodium azide and 40 % Glycerol, pH 7.4

Preservative: Sodium azide

Precaution of Use: This product contains Sodium azide: a POISONOUS AND HAZARDOUS SUBSTANCE which should be handled by trained staff only.

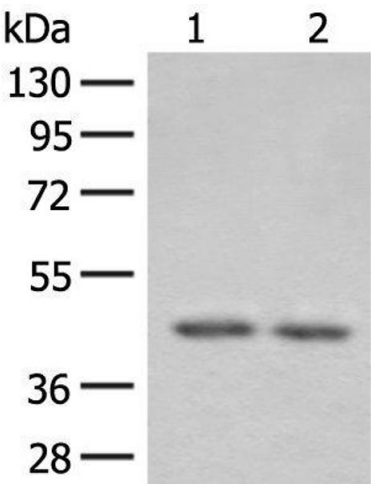
Storage: -20 °C

Storage Comment: Store at -20°C. Avoid freeze / thaw cycles.



Immunohistochemistry (Paraffin-embedded Sections)

Image 1. Immunohistochemistry of paraffin-embedded Human ovarian cancer tissue using ILKAP Polyclonal Antibody at dilution of 1:55(x200)



Western Blotting

Image 2. Western blot analysis of 293T cell lysates using ILKAP Polyclonal Antibody at dilution of 1:800