



[Go to Product page](#)

Datasheet for ABIN7252570

## anti-OLA1 antibody

### 3 Images

#### Overview

Quantity:	200 µL
Target:	OLA1
Reactivity:	Human, Mouse, Rat
Host:	Rabbit
Clonality:	Polyclonal
Conjugate:	This OLA1 antibody is un-conjugated
Application:	Western Blotting (WB), ELISA, Immunohistochemistry (IHC)

#### Product Details

Immunogen:	Fusion protein of human OLA1
Isotype:	IgG
Characteristics:	Polyclonal Antibody
Purification:	Antigen affinity purification

#### Target Details

Target:	OLA1
Alternative Name:	OLA1 ( <a href="#">OLA1 Products</a> )
Background:	This gene encodes a member of the GTPase protein family. The encoded protein interacts with breast cancer-associated gene 1 (BRCA1) and BRCA1-associated RING domain protein (BARD1), and is involved in centrosome regulation. Overexpression of this gene has been observed in multiple types of cancer and may be associated with poor survival. Pseudogenes of

## Target Details

this gene have been defined on chromosomes 17 and 22.

Molecular Weight: Observed\_MW: Refer to figures  
Calculated\_MW: 45 kDa

UniProt: [Q9NTK5](#)

## Application Details

Application Notes: WB 1:500-1:2000, IHC 1:40-1:200, ELISA 1:5000-1:10000

Restrictions: For Research Use only

## Handling

Format: Liquid

Concentration: 0.84 mg/mL

Buffer: PBS with 0.05 % Sodium azide and 40 % Glycerol, pH 7.4

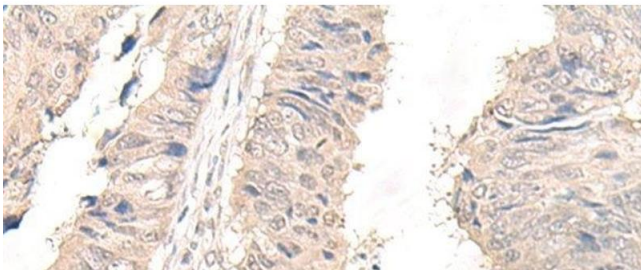
Preservative: Sodium azide

Precaution of Use: This product contains Sodium azide: a POISONOUS AND HAZARDOUS SUBSTANCE which should be handled by trained staff only.

Storage: -20 °C

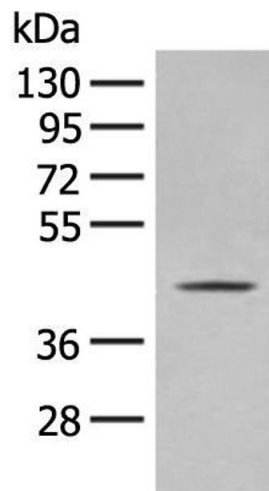
Storage Comment: Store at -20°C. Avoid freeze / thaw cycles.

## Images



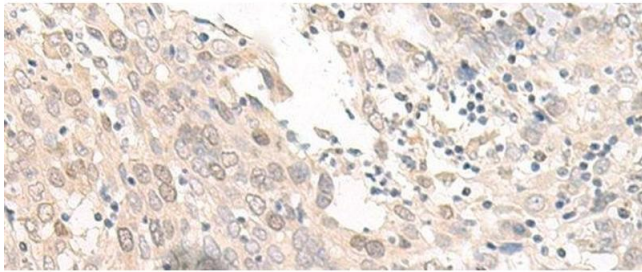
### Immunohistochemistry (Paraffin-embedded Sections)

**Image 1.** Immunohistochemistry of paraffin-embedded Human lung cancer tissue using OLA1 Polyclonal Antibody at dilution of 1:45(x200)



### Western Blotting

**Image 2.** Western blot analysis of A375 cell lysate using OLA1 Polyclonal Antibody at dilution of 1:400



### Immunohistochemistry (Paraffin-embedded Sections)

**Image 3.** Immunohistochemistry of paraffin-embedded Human prost at e cancer tissue using OLA1 Polyclonal Antibody at dilution of 1:45(x200)