



## Datasheet for ABIN7252576 anti-**PLEKHA1** antibody



[Go to Product page](#)

### 2 Images

#### Overview

Quantity:	200 µL
Target:	PLEKHA1
Reactivity:	Human
Host:	Rabbit
Clonality:	Polyclonal
Conjugate:	This PLEKHA1 antibody is un-conjugated
Application:	ELISA, Immunohistochemistry (IHC)

#### Product Details

Immunogen:	Fusion protein of human PLEKHA1
Isotype:	IgG
Characteristics:	Polyclonal Antibody
Purification:	Antigen affinity purification

#### Target Details

Target:	PLEKHA1
Alternative Name:	PLEKHA1 ( <a href="#">PLEKHA1 Products</a> )
Background:	This gene encodes a pleckstrin homology domain-containing adapter protein. The encoded protein is localized to the plasma membrane where it specifically binds phosphatidylinositol 3,4-bisphosphate. This protein may be involved in the formation of signaling complexes in the plasma membrane. Polymorphisms in this gene are associated with age-related macular

## Target Details

degeneration. Alternate splicing results in multiple transcript variants. A pseudogene of this gene is found on chromosome 5.

UniProt: [Q9HB21](#)

Pathways: [Platelet-derived growth Factor Receptor Signaling](#)

## Application Details

Application Notes: IHC 1:30-1:150, ELISA 1:5000-1:10000

Restrictions: For Research Use only

## Handling

Format: Liquid

Concentration: 1.08 mg/mL

Buffer: PBS with 0.05 % Sodium azide and 40 % Glycerol, pH 7.4

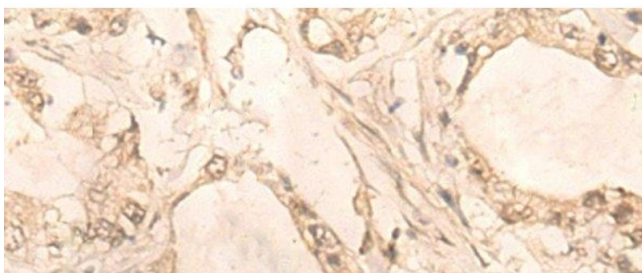
Preservative: Sodium azide

Precaution of Use: This product contains Sodium azide: a POISONOUS AND HAZARDOUS SUBSTANCE which should be handled by trained staff only.

Storage: -20 °C

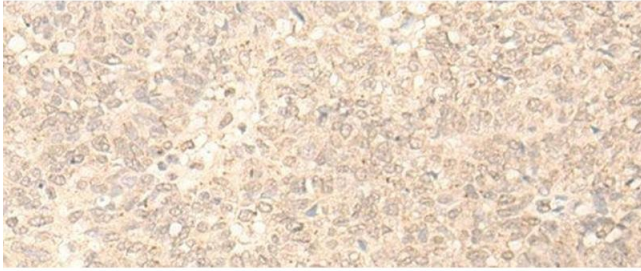
Storage Comment: Store at -20°C. Avoid freeze / thaw cycles.

## Images



### Immunohistochemistry (Paraffin-embedded Sections)

**Image 1.** Immunohistochemistry of paraffin-embedded Human gastric cancer tissue using PLEKHA1 Polyclonal Antibody at dilution of 1:30(x200)



### Immunohistochemistry (Paraffin-embedded Sections)

**Image 2.** Immunohistochemistry of paraffin-embedded Human ovarian cancer tissue using PLEKHA1 Polyclonal Antibody at dilution of 1:30(x200)