



Datasheet for ABIN7252579
anti-KLHDC2 antibody



[Go to Product page](#)

1 Image

Overview

Quantity:	200 µL
Target:	KLHDC2
Reactivity:	Human, Mouse, Rat
Host:	Rabbit
Clonality:	Polyclonal
Conjugate:	This KLHDC2 antibody is un-conjugated
Application:	Western Blotting (WB), ELISA

Product Details

Immunogen:	Fusion protein of human KLHDC2
Isotype:	IgG
Characteristics:	Polyclonal Antibody
Purification:	Antigen affinity purification

Target Details

Target:	KLHDC2
Alternative Name:	KLHDC2 (KLHDC2 Products)
Background:	Represses CREB3-mediated transcription by interfering with CREB3-DNA binding.
Molecular Weight:	Observed_MW: Refer to figures Calculated_MW: 46 kDa

Target Details

UniProt: [Q9Y2U9](#)

Application Details

Application Notes: WB 1:500-1:2000, ELISA 1:5000-1:10000

Restrictions: For Research Use only

Handling

Format: Liquid

Concentration: 0.66 mg/mL

Buffer: PBS with 0.05 % Sodium azide and 40 % Glycerol, pH 7.4

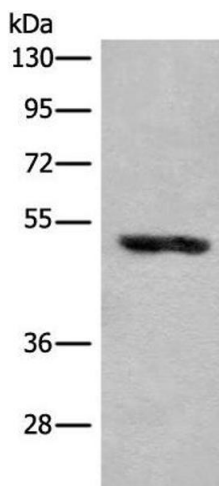
Preservative: Sodium azide

Precaution of Use: This product contains Sodium azide: a POISONOUS AND HAZARDOUS SUBSTANCE which should be handled by trained staff only.

Storage: -20 °C

Storage Comment: Store at -20°C. Avoid freeze / thaw cycles.

Images



Western Blotting

Image 1. Western blot analysis of Human placenta tissue lysate using KLHDC2 Polyclonal Antibody at dilution of 1:400