

Datasheet for ABIN7252696

anti-FXYD6 antibody[Go to Product page](#)**1** Image

Overview

Quantity:	200 µL
Target:	FXYD6
Reactivity:	Human, Mouse, Rat
Host:	Rabbit
Clonality:	Polyclonal
Conjugate:	This FXYD6 antibody is un-conjugated
Application:	ELISA, Immunohistochemistry (IHC)

Product Details

Immunogen:	Fusion protein of human FXYD6
Isotype:	IgG
Characteristics:	Polyclonal Antibody
Purification:	Antigen affinity purification

Target Details

Target:	FXYD6
Alternative Name:	FXYD6 (FXYD6 Products)
Background:	<p>This gene encodes a member of the FXYD family of transmembrane proteins. This particular protein encodes phosphohippolin, which likely affects the activity of Na,K-ATPase. Multiple alternatively spliced transcript variants encoding the same protein have been described.</p> <p>Related pseudogenes have been identified on chromosomes 10 and X. Read-through</p>

Target Details

transcripts have been observed between this locus and the downstream sodium/potassium-transporting ATPase subunit gamma (FXVD2, GeneID 486) locus.

UniProt: [Q9H0Q3](#)

Application Details

Application Notes: IHC 1:50-1:300, ELISA 1:5000-1:10000

Restrictions: For Research Use only

Handling

Format: Liquid

Concentration: 1.14 mg/mL

Buffer: PBS with 0.05 % Sodium azide and 40 % Glycerol, pH 7.4

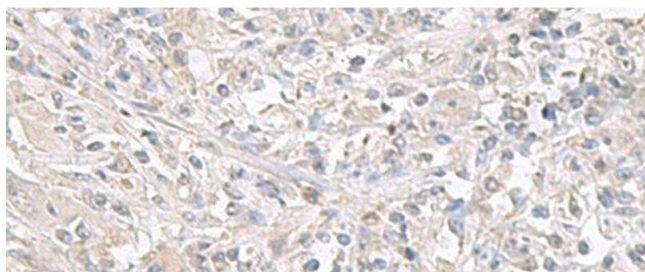
Preservative: Sodium azide

Precaution of Use: This product contains Sodium azide: a POISONOUS AND HAZARDOUS SUBSTANCE which should be handled by trained staff only.

Storage: -20 °C

Storage Comment: Store at -20°C. Avoid freeze / thaw cycles.

Images



Immunohistochemistry (Paraffin-embedded Sections)

Image 1. Immunohistochemistry of paraffin-embedded Human liver cancer tissue using FXVD6 Polyclonal Antibody at dilution of 1:65(x200)