

Datasheet for ABIN7252717

anti-SAA1 antibody

1 Image

[Go to Product page](#)

Overview

Quantity:	200 µL
Target:	SAA1
Reactivity:	Human
Host:	Rabbit
Clonality:	Polyclonal
Conjugate:	This SAA1 antibody is un-conjugated
Application:	ELISA, Immunohistochemistry (IHC)

Product Details

Immunogen:	Fusion protein of human SAA1
Isotype:	IgG
Characteristics:	Polyclonal Antibody
Purification:	Antigen affinity purification

Target Details

Target:	SAA1
Alternative Name:	SAA1 (SAA1 Products)
Background:	This gene encodes a member of the serum amyloid A family of apolipoproteins. The encoded preproprotein is proteolytically processed to generate the mature protein. This protein is a major acute phase protein that is highly expressed in response to inflammation and tissue injury. This protein also plays an important role in HDL metabolism and cholesterol

Target Details

homeostasis. High levels of this protein are associated with chronic inflammatory diseases including atherosclerosis, rheumatoid arthritis, Alzheimer's disease and Crohn's disease. This protein may also be a potential biomarker for certain tumors. Alternate splicing results in multiple transcript variants that encode the same protein. A pseudogene of this gene is found on chromosome 11. SAA1 (Serum Amyloid A1) is a Protein Coding gene. Diseases associated with SAA1 include Amyloidosis Aa and Splenic Artery Aneurysm. Among its related pathways are Peptide ligand-binding receptors and Activated TLR4 signalling. GO annotations related to this gene include heparin binding and chemoattractant activity. An important paralog of this gene is SAA2.

UniProt: [P0DJ18](#)

Pathways: [Toll-Like Receptors Cascades](#)

Application Details

Application Notes: IHC 1:100-1:300, ELISA 1:5000-1:10000

Restrictions: For Research Use only

Handling

Format: Liquid

Concentration: 1.2 mg/mL

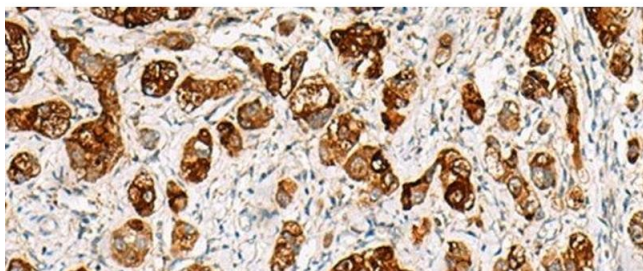
Buffer: PBS with 0.05 % Sodium azide and 40 % Glycerol, pH 7.4

Preservative: Sodium azide

Precaution of Use: This product contains Sodium azide: a POISONOUS AND HAZARDOUS SUBSTANCE which should be handled by trained staff only.

Storage: -20 °C

Storage Comment: Store at -20°C. Avoid freeze / thaw cycles.



Immunohistochemistry (Paraffin-embedded Sections)

Image 1. Immunohistochemistry of paraffin-embedded Human liver cancer tissue using SAA1 Polyclonal Antibody at dilution of 1:70(x200)