

Datasheet for ABIN7252756

anti-MTAP antibody[Go to Product page](#)**1** Image

Overview

Quantity:	200 µL
Target:	MTAP
Reactivity:	Human
Host:	Rabbit
Clonality:	Polyclonal
Conjugate:	This MTAP antibody is un-conjugated
Application:	ELISA, Immunohistochemistry (IHC)

Product Details

Immunogen:	Fusion protein of human MTAP
Isotype:	IgG
Characteristics:	Polyclonal Antibody
Purification:	Antigen affinity purification

Target Details

Target:	MTAP
Alternative Name:	MTAP (MTAP Products)
Background:	This gene encodes an enzyme that plays a major role in polyamine metabolism and is important for the salvage of both adenine and methionine. The encoded enzyme is deficient in many cancers because this gene and the tumor suppressor p16 gene are co-deleted. Multiple alternatively spliced transcript variants have been described for this gene, but their full-length

Target Details

natures remain unknown.

UniProt: [Q13126](#)

Pathways: [Ribonucleoside Biosynthetic Process](#), [Methionine Biosynthetic Process](#)

Application Details

Application Notes: IHC 1:50-1:200, ELISA 1:5000-1:10000

Restrictions: For Research Use only

Handling

Format: Liquid

Concentration: 1.26 mg/mL

Buffer: PBS with 0.05 % Sodium azide and 40 % Glycerol, pH 7.4

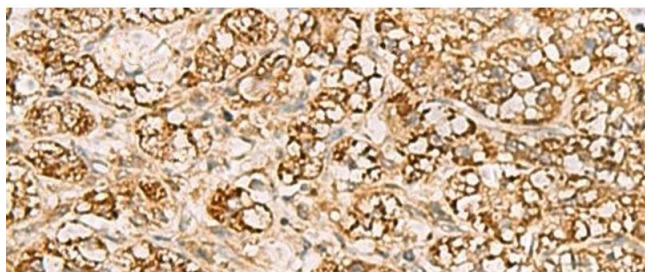
Preservative: Sodium azide

Precaution of Use: This product contains Sodium azide: a POISONOUS AND HAZARDOUS SUBSTANCE which should be handled by trained staff only.

Storage: -20 °C

Storage Comment: Store at -20°C. Avoid freeze / thaw cycles.

Images



Immunohistochemistry (Paraffin-embedded Sections)

Image 1. Immunohistochemistry of paraffin-embedded Human liver cancer tissue using MTAP Polyclonal Antibody at dilution of 1:70(x200)