

Datasheet for ABIN7252762

**anti-RPL23A antibody**[Go to Product page](#)**2** Images

## Overview

Quantity:	200 µL
Target:	RPL23A
Reactivity:	Human, Mouse, Rat
Host:	Rabbit
Clonality:	Polyclonal
Conjugate:	This RPL23A antibody is un-conjugated
Application:	Western Blotting (WB), ELISA, Immunohistochemistry (IHC)

## Product Details

Immunogen:	Fusion protein of human RPL23A
Isotype:	IgG
Characteristics:	Polyclonal Antibody
Purification:	Antigen affinity purification

## Target Details

Target:	RPL23A
Alternative Name:	RPL23A ( <a href="#">RPL23A Products</a> )
Background:	Ribosomes, the organelles that catalyze protein synthesis, consist of a small 40S subunit and a large 60S subunit. Together these subunits are composed of 4 RNA species and approximately 80 structurally distinct proteins. This gene encodes a ribosomal protein that is a component of the 60S subunit. The protein belongs to the L23P family of ribosomal proteins. It is located in

## Target Details

the cytoplasm. The protein may be one of the target molecules involved in mediating growth inhibition by interferon. In yeast, the corresponding protein binds to a specific site on the 26S rRNA. This gene is co-transcribed with the U42A, U42B, U101A, and U101B small nucleolar RNA genes, which are located in its third, first, second, and fourth introns, respectively. As is typical for genes encoding ribosomal proteins, there are multiple processed pseudogenes of this gene dispersed through the genome.

Molecular Weight:	Observed_MW: Refer to figures Calculated_MW: 18 kDa
-------------------	--

UniProt:	<a href="#">P62750</a>
----------	------------------------

## Application Details

Application Notes:	WB 1:500-1:2000, IHC 1:40-1:200, ELISA 1:5000-1:10000
--------------------	---

Restrictions:	For Research Use only
---------------	-----------------------

## Handling

Format:	Liquid
---------	--------

Concentration:	0.9 mg/mL
----------------	-----------

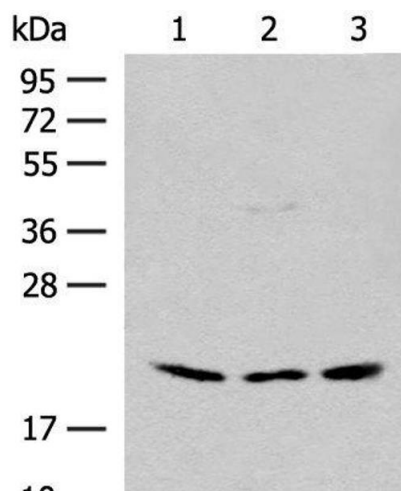
Buffer:	PBS with 0.05 % Sodium azide and 40 % Glycerol, pH 7.4
---------	--

Preservative:	Sodium azide
---------------	--------------

Precaution of Use:	This product contains Sodium azide: a POISONOUS AND HAZARDOUS SUBSTANCE which should be handled by trained staff only.
--------------------	--

Storage:	-20 °C
----------	--------

Storage Comment:	Store at -20°C. Avoid freeze / thaw cycles.
------------------	---



**Western Blotting**

**Image 1.** Western blot analysis of HEPG2 and Hela cell Mouse liver tissue lysates using RPL23A Polyclonal Antibody at dilution of 1:300



**Immunohistochemistry (Paraffin-embedded Sections)**

**Image 2.** Immunohistochemistry of paraffin-embedded Human brain tissue using RPL23A Polyclonal Antibody at dilution of 1:50(x200)