

Datasheet for ABIN7252777

anti-ZC3H7A antibody**2** Images[Go to Product page](#)

Overview

Quantity:	200 µL
Target:	ZC3H7A
Reactivity:	Human
Host:	Rabbit
Clonality:	Polyclonal
Conjugate:	This ZC3H7A antibody is un-conjugated
Application:	ELISA, Immunohistochemistry (IHC)

Product Details

Immunogen:	Fusion protein of human ZC3H7A
Isotype:	IgG
Characteristics:	Polyclonal Antibody
Purification:	Antigen affinity purification

Target Details

Target:	ZC3H7A
Alternative Name:	ZC3H7A (ZC3H7A Products)
Background:	The zinc finger CCCH domain-containing protein 7A (ZC3H7A), also known as ZC3H7, HSPC055 or ZC3HDC7, is a 971 amino acid protein that contains a C3H1-type zinc finger domain, three C3H1-type zinc fingers and three TPR repeats. Belonging to the ZC3H12 family, ZC3H7A localizes to the nucleus. Existing as two alternatively spliced isoforms, ZC3H7A is

Target Details

encoded by a gene located on human chromosome 16p13.13. Chromosome 16 makes up nearly 3 % of human cellular DNA and is associated with a variety of genetic disorders. The GAN gene is located on chromosome 16 and, with mutation, may lead to giant axonal neuropathy, a nervous system disorder characterized by increasing malfunction with growth. The rare disorder Rubinstein-Taybi syndrome is also associated with chromosome 16, though through the CREBBP gene which encodes a critical CREB binding protein. Signs of Rubinstein-Taybi include mental retardation and predisposition to tumor growth and white blood cell neoplasias. Crohn's disease is a gastrointestinal inflammatory condition associated with chromosome 16 through the NOD2 gene.

UniProt: [Q8IWR0](#)

Pathways: [SARS-CoV-2 Protein Interactome](#)

Application Details

Application Notes: IHC 1:50-1:300, ELISA 1:5000-1:10000

Restrictions: For Research Use only

Handling

Format: Liquid

Concentration: 0.9 mg/mL

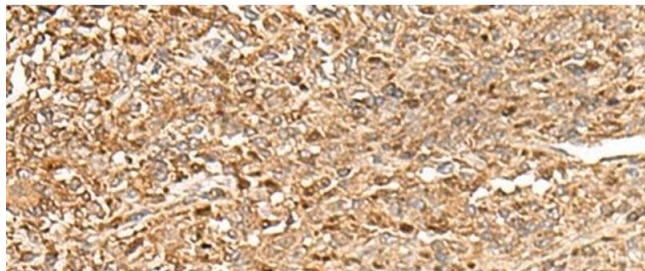
Buffer: PBS with 0.05 % Sodium azide and 40 % Glycerol, pH 7.4

Preservative: Sodium azide

Precaution of Use: This product contains Sodium azide: a POISONOUS AND HAZARDOUS SUBSTANCE which should be handled by trained staff only.

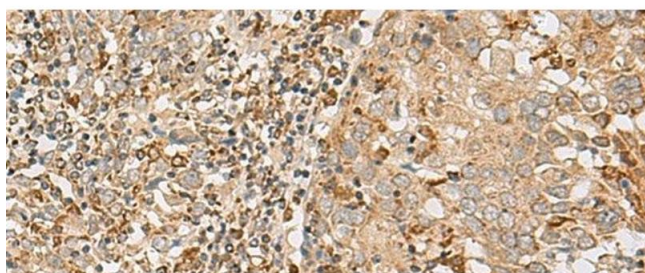
Storage: -20 °C

Storage Comment: Store at -20°C. Avoid freeze / thaw cycles.



Immunohistochemistry (Paraffin-embedded Sections)

Image 1. Immunohistochemistry of paraffin-embedded Human liver cancer tissue using ZC3H7A Polyclonal Antibody at dilution of 1:50(x200)



Immunohistochemistry (Paraffin-embedded Sections)

Image 2. Immunohistochemistry of paraffin-embedded Human cervical cancer tissue using ZC3H7A Polyclonal Antibody at dilution of 1:50(x200)